



**ELECTRONIC COPY**

LG794640923  
Report verification at igi.org



April 21, 2026

IGI Report Number **LG794640923**

Description **LABORATORY GROWN DIAMOND**

Shape and Cutting Style **CUSHION MODIFIED BRILLIANT**

Measurements **9.95 X 8.01 X 5.20 MM**

**GRADING RESULTS**

Carat Weight **3.13 CARATS**

Color Grade **D**

Clarity Grade **VVS 1**

Cut Grade **EXCELLENT**

**LABORATORY GROWN DIAMOND REPORT**

April 21, 2026

IGI Report Number **LG794640923**

Description **LABORATORY GROWN DIAMOND**

Shape and Cutting Style **CUSHION MODIFIED BRILLIANT**

Measurements **9.95 X 8.01 X 5.20 MM**

**GRADING RESULTS**

Carat Weight **3.13 CARATS**

Color Grade **D**

Clarity Grade **VVS 1**

Cut Grade **EXCELLENT**

**ADDITIONAL GRADING INFORMATION**

Polish **EXCELLENT**

Symmetry **EXCELLENT**

Fluorescence **NONE**

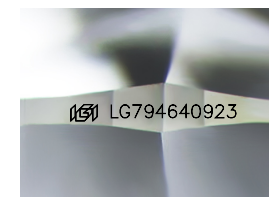
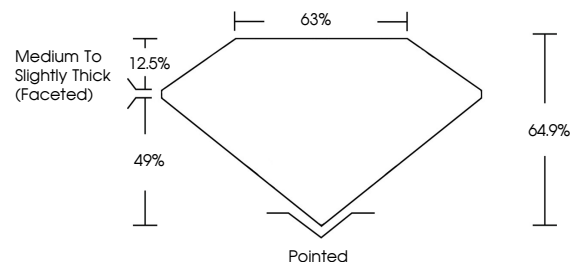
Inscription(s) **LG794640923**

Comments: As Grown - No indication of post-growth treatment.

This Laboratory Grown Diamond was created by High Pressure High Temperature (HPHT) growth process.

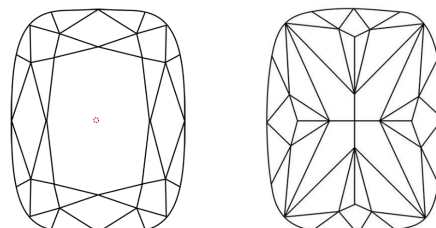
Type II

**PROPORTIONS**



Sample Image Used

**CLARITY CHARACTERISTICS**



**KEY TO SYMBOLS**

Red symbols indicate internal characteristics.  
Green symbols indicate external characteristics.

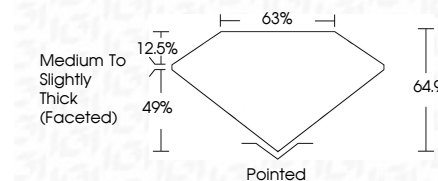
**COLOR**

D E F G H I J Faint Very Light Light

**CLARITY**

FL IF VVS<sup>1-2</sup> VS<sup>1-2</sup> SI<sup>1-2</sup> I<sup>1-3</sup>

Flawless Internally Flawless Very Very Slightly Included Very Slightly Included Slightly Included Included



**ADDITIONAL GRADING INFORMATION**

Polish **EXCELLENT**

Symmetry **EXCELLENT**

Fluorescence **NONE**

Inscription(s) **LG794640923**

Comments: As Grown - No indication of post-growth treatment.

This Laboratory Grown Diamond was created by High Pressure High Temperature (HPHT) growth process.

Type II



**IGI**



April 21, 2026  
IGI Report No LG794640923  
CUSHION MODIFIED BRILLIANT

3.13 CARATS  
D  
EXCELLENT  
64.9%  
68%  
Medium To Slightly Thick (Faceted)

Pointed  
EXCELLENT  
EXCELLENT  
NONE  
IGI LG794640923

Cutler  
Polish  
Symmetry  
Fluorescence  
Inscriptions(s)

Comments:  
As Grown - No indication of post-growth treatment.  
This Laboratory Grown Diamond was created by High Pressure High Temperature (HPHT) growth process.  
Type II