



ELECTRONIC COPY

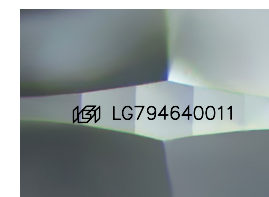
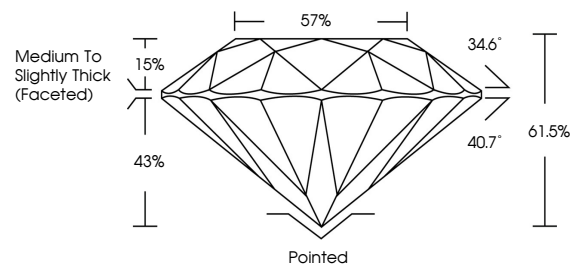
LG794640011
Report verification at igi.org



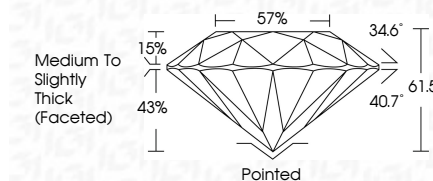
April 21, 2026
IGI Report Number LG794640011
Description LABORATORY GROWN DIAMOND
Shape and Cutting Style ROUND BRILLIANT
Measurements 6.95 - 6.99 X 4.28 MM
GRADING RESULTS
Carat Weight 1.27 CARAT
Color Grade D
Clarity Grade VVS 2
Cut Grade IDEAL

April 21, 2026
IGI Report Number LG794640011
Description LABORATORY GROWN DIAMOND
Shape and Cutting Style ROUND BRILLIANT
Measurements 6.95 - 6.99 X 4.28 MM
GRADING RESULTS
Carat Weight 1.27 CARAT
Color Grade D
Clarity Grade VVS 2
Cut Grade IDEAL

PROPORTIONS



Sample Image Used



ADDITIONAL GRADING INFORMATION
Polish EXCELLENT
Symmetry EXCELLENT
Fluorescence NONE
Inscription(s) IGI LG794640011

Comments: This Laboratory Grown Diamond was created by Chemical Vapor Deposition (CVD) growth process. Type IIa

COLOR

D E F G H I J Faint Very Light Light

CLARITY

FL IF VS 1-2 VS 1-2 SI 1-2 I 1-3
Flawless Internally Flawless Very Very Slightly Included Very Slightly Included Slightly Included Included

ADDITIONAL GRADING INFORMATION

Polish EXCELLENT
Symmetry EXCELLENT
Fluorescence NONE
Inscription(s) IGI LG794640011
Comments: This Laboratory Grown Diamond was created by Chemical Vapor Deposition (CVD) growth process. Type IIa



IGI

April 21, 2026
IGI Report No LG794640011
ROUND BRILLIANT
6.95 - 6.99 X 4.28 MM
1.27 CARAT
Color Grade D
Clarity Grade VVS 2
Depth IDEAL
Table 61.5%
Girdle 57%
Medium To Slightly Thick (Faceted)
Pointed
Polish EXCELLENT
Symmetry EXCELLENT
Fluorescence NONE
Inscription(s) IGI LG794640011
Comments: This Laboratory Grown Diamond was created by Chemical Vapor Deposition (CVD) growth process. Type IIa