



ELECTRONIC COPY

LABORATORY GROWN DIAMOND REPORT

May 22, 2026
IGI Report Number LG794639314
Description LABORATORY GROWN DIAMOND
Shape and Cutting Style HEXAGONAL MODIFIED BRILLIANT
Measurements 14.08 X 6.79 X 4.40 MM

GRADING RESULTS

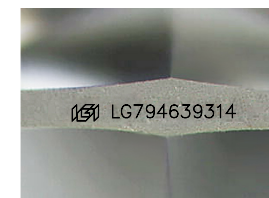
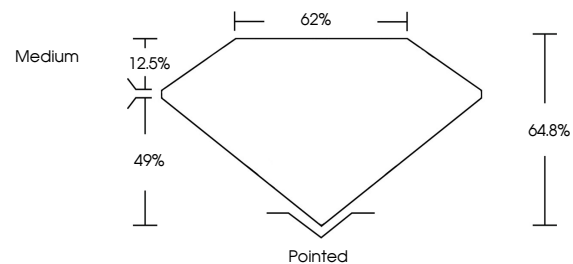
Carat Weight 2.56 CARATS
Color Grade F
Clarity Grade VVS 2

ADDITIONAL GRADING INFORMATION

Polish EXCELLENT
Symmetry EXCELLENT
Fluorescence NONE
Inscription(s) IGI LG794639314

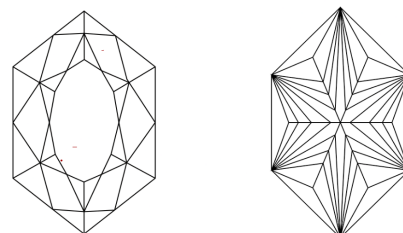
Comments: This Laboratory Grown Diamond was created by Chemical Vapor Deposition (CVD) growth process.
Type IIa

PROPORTIONS



Sample Image Used

CLARITY CHARACTERISTICS



KEY TO SYMBOLS

Red symbols indicate internal characteristics.
Green symbols indicate external characteristics.

COLOR

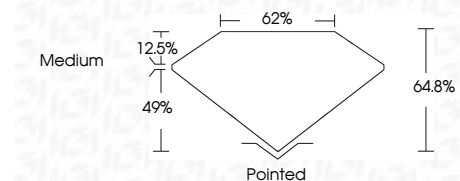
D E F G H I J Faint Very Light Light

CLARITY

FL	IF	VVS ¹⁻²	VS ¹⁻²	SI ¹⁻²	I ¹⁻³
Flawless	Internally Flawless	Very Very Slightly Included	Very Slightly Included	Slightly Included	Included



May 22, 2026
IGI Report Number LG794639314
Description LABORATORY GROWN DIAMOND
Shape and Cutting Style HEXAGONAL MODIFIED BRILLIANT
Measurements 14.08 X 6.79 X 4.40 MM
GRADING RESULTS
Carat Weight 2.56 CARATS
Color Grade F
Clarity Grade VVS 2



ADDITIONAL GRADING INFORMATION

Polish EXCELLENT
Symmetry EXCELLENT
Fluorescence NONE
Inscription(s) IGI LG794639314
Comments: This Laboratory Grown Diamond was created by Chemical Vapor Deposition (CVD) growth process.
Type IIa



May 22, 2026
IGI Report No LG794639314
HEXAGONAL MODIFIED BRILLIANT
2.56 CARATS F
Carat Weight 2.56 CARATS
Color Grade F
Clarity Grade VVS 2
Depth 49%
Table 12.5%
Girdle 62%
Medium
Pointed
Polish EXCELLENT
Symmetry EXCELLENT
Fluorescence NONE
Inscription(s) IGI LG794639314
Comments: This Laboratory Grown Diamond was created by Chemical Vapor Deposition (CVD) growth process.
Type IIa