



**ELECTRONIC COPY**

LG794637491  
Report verification at igi.org



May 9, 2026

IGI Report Number **LG794637491**

Description **LABORATORY GROWN DIAMOND**

Shape and Cutting Style **HEART BRILLIANT**

Measurements **9.22 X 10.06 X 5.83 MM**

**GRADING RESULTS**

Carat Weight **3.04 CARATS**

Color Grade **FANCY VIVID GREEN**

Clarity Grade **VVS 2**

May 9, 2026

IGI Report Number **LG794637491**

Description **LABORATORY GROWN DIAMOND**

Shape and Cutting Style **HEART BRILLIANT**

Measurements **9.22 X 10.06 X 5.83 MM**

**GRADING RESULTS**

Carat Weight **3.04 CARATS**

Color Grade **FANCY VIVID GREEN**

Clarity Grade **VVS 2**

**ADDITIONAL GRADING INFORMATION**

Polish **VERY GOOD**

Symmetry **EXCELLENT**

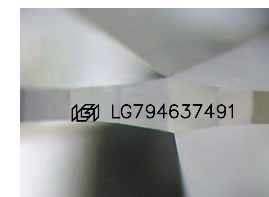
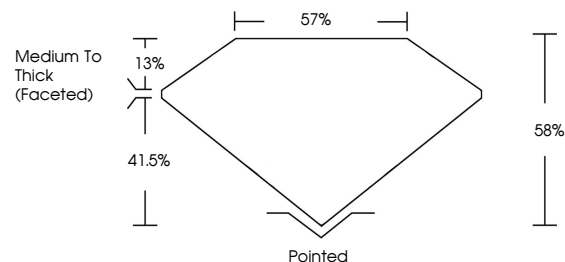
Fluorescence **NONE**

Inscription(s) **IGI LG794637491**

Comments: This Laboratory Grown Diamond was created by Chemical Vapor Deposition (CVD) growth process.

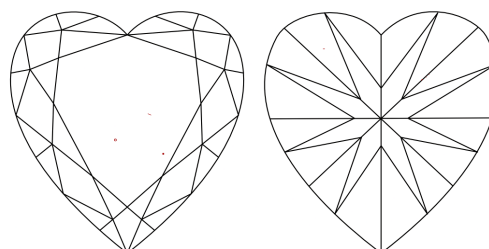
Indications of post-growth treatment.

**PROPORTIONS**



Sample Image Used

**CLARITY CHARACTERISTICS**



**KEY TO SYMBOLS**

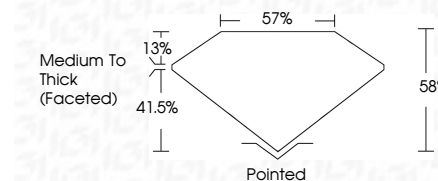
Red symbols indicate internal characteristics.  
Green symbols indicate external characteristics.

**COLOR**

D E F G H I J Faint Very Light Light

**CLARITY**

FL	IF	VVS <sup>1-2</sup>	VS <sup>1-2</sup>	SI <sup>1-2</sup>	I <sup>1-3</sup>
Flawless	Internally Flawless	Very Very Slightly Included	Very Slightly Included	Slightly Included	Included



**ADDITIONAL GRADING INFORMATION**

Polish **VERY GOOD**

Symmetry **EXCELLENT**

Fluorescence **NONE**

Inscription(s) **IGI LG794637491**

Comments: This Laboratory Grown Diamond was created by Chemical Vapor Deposition (CVD) growth process. Indications of post-growth treatment.



May 9, 2026  
IGI Report No LG794637491  
**HEART BRILLIANT**

**3.04 CARATS**  
Carat Weight  
**FANCY VIVID GREEN**  
Color Grade  
**VVS 2**  
Clarity Grade  
**Medium To Thick (Faceted)**  
Table **6%**  
Depth **57%**  
Girdle  
**Pointed**  
Culet  
**VERY GOOD**  
Polish  
**EXCELLENT**  
Symmetry  
**NONE**  
Fluorescence  
**NONE**  
Inscription(s)  
**IGI LG794637491**

Comments: This Laboratory Grown Diamond was created by Chemical Vapor Deposition (CVD) growth process. Indications of post-growth treatment.