



ELECTRONIC COPY

LG794637452
Report verification at igi.org



May 9, 2026

IGI Report Number **LG794637452**

Description **LABORATORY GROWN DIAMOND**

Shape and Cutting Style **ROUND BRILLIANT**

Measurements **9.43 - 9.48 X 5.44 MM**

GRADING RESULTS

Carat Weight **3.00 CARATS**

Color Grade **FANCY VIVID PINK**

Clarity Grade **VS 2**

Cut Grade **EXCELLENT**

May 9, 2026

IGI Report Number **LG794637452**

Description **LABORATORY GROWN DIAMOND**

Shape and Cutting Style **ROUND BRILLIANT**

Measurements **9.43 - 9.48 X 5.44 MM**

GRADING RESULTS

Carat Weight **3.00 CARATS**

Color Grade **FANCY VIVID PINK**

Clarity Grade **VS 2**

Cut Grade **EXCELLENT**

ADDITIONAL GRADING INFORMATION

Polish **EXCELLENT**

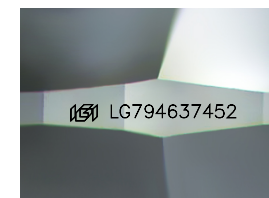
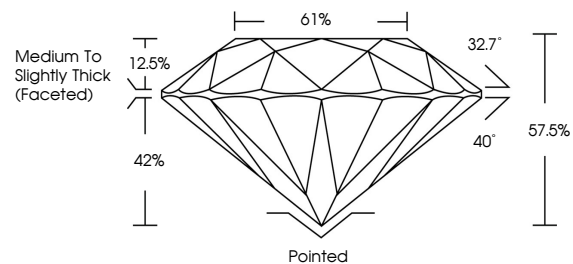
Symmetry **EXCELLENT**

Fluorescence **SLIGHT**

Inscription(s) **IGI LG794637452**

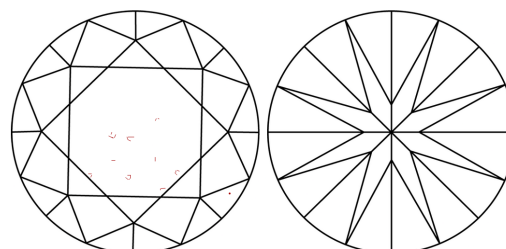
Comments: This Laboratory Grown Diamond was created by Chemical Vapor Deposition (CVD) growth process.
Indications of post-growth treatment.

PROPORTIONS



Sample Image Used

CLARITY CHARACTERISTICS



KEY TO SYMBOLS

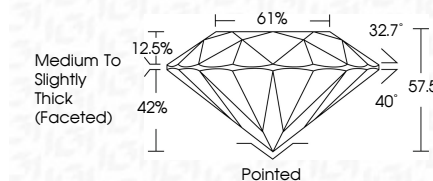
Red symbols indicate internal characteristics.
Green symbols indicate external characteristics.

COLOR

D E F G H I J Faint Very Light Light

CLARITY

FL	IF	VS ¹⁻²	VS ¹⁻²	SI ¹⁻²	I ¹⁻³
Flawless	Internally Flawless	Very Very Slightly Included	Very Slightly Included	Slightly Included	Included



ADDITIONAL GRADING INFORMATION

Polish **EXCELLENT**

Symmetry **EXCELLENT**

Fluorescence **SLIGHT**

Inscription(s) **IGI LG794637452**

Comments: This Laboratory Grown Diamond was created by Chemical Vapor Deposition (CVD) growth process.
Indications of post-growth treatment.



May 9, 2026	3.00 CARATS	Pointed
IGI Report No LG794637452	FANCY VIVID PINK	EXCELLENT
ROUND BRILLIANT	VS 2	EXCELLENT
9.43 - 9.48 X 5.44 MM	EXCELLENT	EXCELLENT
Carat Weight	Cut Grade	Medium To Slightly Thick (Faceted)
Color Grade	Depth	61%
Clarity Grade	Table	32.7°
Cut Grade	Girdle	40°
Polish	Symmetry	42%
Symmetry	Fluorescence	12.5%
Fluorescence	Inscription(s)	57.5%
Inscription(s)		

Comments: This Laboratory Grown Diamond was created by Chemical Vapor Deposition (CVD) growth process.
Indications of post-growth treatment.