



ELECTRONIC COPY

LG794637100
Report verification at igi.org



May 4, 2026
IGI Report Number **LG794637100**
Description **LABORATORY GROWN DIAMOND**
Shape and Cutting Style **CUT CORNERED
RECTANGULAR MODIFIED
BRILLIANT**
Measurements **11.53 X 7.54 X 5.40 MM**
GRADING RESULTS
Carat Weight **4.52 CARATS**
Color Grade **FANCY VIVID YELLOW**
Clarity Grade **VS 1**

May 4, 2026
IGI Report Number **LG794637100**
Description **LABORATORY GROWN DIAMOND**
Shape and Cutting Style **CUT CORNERED RECTANGULAR
MODIFIED BRILLIANT**
Measurements **11.53 X 7.54 X 5.40 MM**

GRADING RESULTS

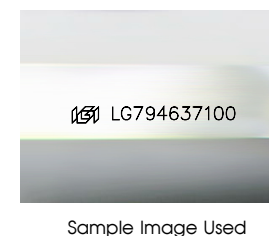
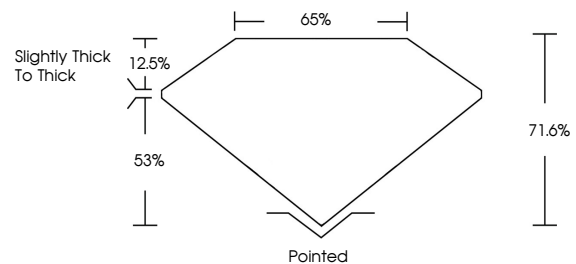
Carat Weight **4.52 CARATS**
Color Grade **FANCY VIVID YELLOW**
Clarity Grade **VS 1**

ADDITIONAL GRADING INFORMATION

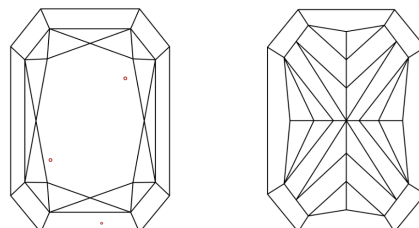
Polish **EXCELLENT**
Symmetry **EXCELLENT**
Fluorescence **NONE**
Inscription(s) **IGI LG794637100**

Comments: This Laboratory Grown Diamond was created by Chemical Vapor Deposition (CVD) growth process.

PROPORTIONS



CLARITY CHARACTERISTICS



KEY TO SYMBOLS

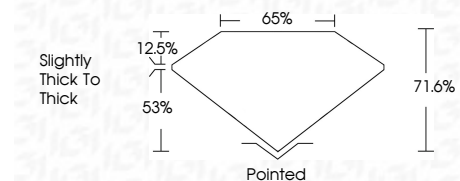
Red symbols indicate internal characteristics.
Green symbols indicate external characteristics.

COLOR

D E F G H I J Faint Very Light Light

CLARITY

| FL | IF | VS ¹⁻² | VS ¹⁻² | SI ¹⁻² | I ¹⁻³ |
|----------|---------------------|-----------------------------|------------------------|-------------------|------------------|
| Flawless | Internally Flawless | Very Very Slightly Included | Very Slightly Included | Slightly Included | Included |



ADDITIONAL GRADING INFORMATION

Polish **EXCELLENT**
Symmetry **EXCELLENT**
Fluorescence **NONE**
Inscription(s) **IGI LG794637100**
Comments: This Laboratory Grown Diamond was created by Chemical Vapor Deposition (CVD) growth process.



IGI



May 4, 2026
IGI Report No LG794637100
CUT CORNERED RECT. MODIFIED BRILLIANT
11.53 X 7.54 X 5.40 MM
4.52 CARATS
FANCY VIVID YELLOW
VS 1
71.6%
53%
Slightly thick to thick
Pointed
EXCELLENT
EXCELLENT
NONE
IGI LG794637100
Comments: This Laboratory Grown Diamond was created by Chemical Vapor Deposition (CVD) growth process.