



ELECTRONIC COPY

LG794636440
Report verification at igi.org



April 23, 2026

IGI Report Number **LG794636440**

Description **LABORATORY GROWN DIAMOND**

Shape and Cutting Style **OVAL BRILLIANT**

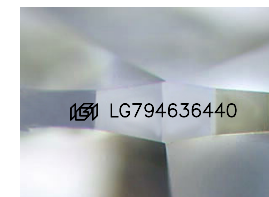
Measurements **13.00 X 9.02 X 5.58 MM**

GRADING RESULTS

Carat Weight **4.06 CARATS**

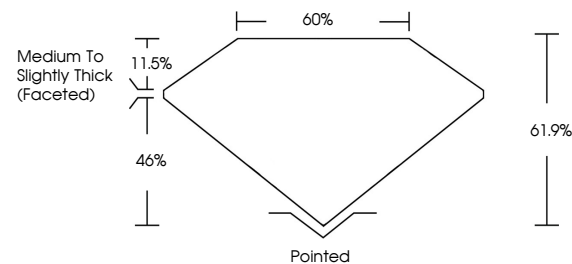
Color Grade **E**

Clarity Grade **VVS 2**

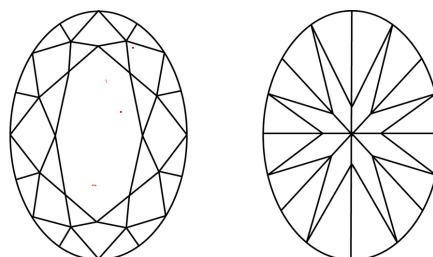


Sample Image Used

PROPORTIONS



CLARITY CHARACTERISTICS



KEY TO SYMBOLS

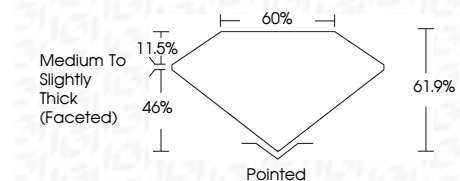
Red symbols indicate internal characteristics.
Green symbols indicate external characteristics.

COLOR

D E F G H I J Faint Very Light Light

CLARITY

FL	IF	VVS ¹⁻²	VS ¹⁻²	SI ¹⁻²	I ¹⁻³
Flawless	Internally Flawless	Very Very Slightly Included	Very Slightly Included	Slightly Included	Included



ADDITIONAL GRADING INFORMATION

Polish **EXCELLENT**

Symmetry **EXCELLENT**

Fluorescence **NONE**

Inscription(s) **IGI LG794636440**

Comments: This Laboratory Grown Diamond was created by Chemical Vapor Deposition (CVD) growth process. Type IIa



April 23, 2026	4.06 CARATS
IGI Report No LG794636440	E
OVAL BRILLIANT	VVS 2
13.00 X 9.02 X 5.58 MM	61.9%
Carat Weight	60%
Color Grade	Medium to Slightly Thick (Faceted)
Clarity Grade	Pointed
Depth	EXCELLENT
Table	EXCELLENT
Girdle	NONE
Culet	IGI LG794636440
Polish	
Symmetry	
Fluorescence	
Inscription(s)	

Comments: This Laboratory Grown Diamond was created by Chemical Vapor Deposition (CVD) growth process. Type IIa