



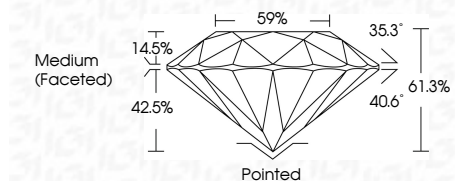
ELECTRONIC COPY

LG794635078 Report verification at igi.org



May 5, 2026 IGI Report Number LG794635078 Description LABORATORY GROWN DIAMOND Shape and Cutting Style ROUND BRILLIANT Measurements 7.41 - 7.45 X 4.56 MM

GRADING RESULTS Carat Weight 1.57 CARAT Color Grade D Clarity Grade VS 1 Cut Grade IDEAL



ADDITIONAL GRADING INFORMATION Polish EXCELLENT Symmetry EXCELLENT Fluorescence NONE Inscription(s) IGI LG794635078 Comments: This Laboratory Grown Diamond was created by Chemical Vapor Deposition (CVD) growth process. Type IIa



May 5, 2026 IGI Report No LG794635078 ROUND BRILLIANT 7.41 - 7.45 X 4.56 MM 1.57 CARAT D VS 1 IDEAL 61.3% 59% Medium (Faceted) Pointed EXCELLENT EXCELLENT NONE IGI LG794635078 Comments: This Laboratory Grown Diamond was created by Chemical Vapor Deposition (CVD) growth process. Type IIa

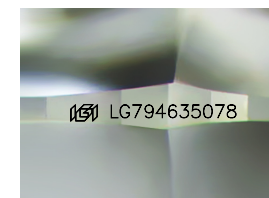
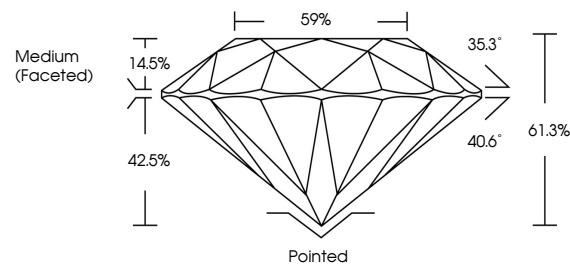
May 5, 2026 IGI Report Number LG794635078 Description LABORATORY GROWN DIAMOND Shape and Cutting Style ROUND BRILLIANT Measurements 7.41 - 7.45 X 4.56 MM

GRADING RESULTS Carat Weight 1.57 CARAT Color Grade D Clarity Grade VS 1 Cut Grade IDEAL

ADDITIONAL GRADING INFORMATION Polish EXCELLENT Symmetry EXCELLENT Fluorescence NONE Inscription(s) IGI LG794635078

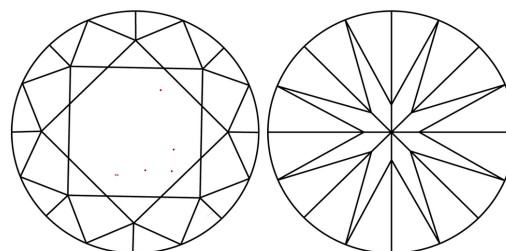
Comments: This Laboratory Grown Diamond was created by Chemical Vapor Deposition (CVD) growth process. Type IIa

PROPORTIONS



Sample Image Used

CLARITY CHARACTERISTICS



KEY TO SYMBOLS

Red symbols indicate internal characteristics. Green symbols indicate external characteristics.

COLOR

D E F G H I J Faint Very Light Light

CLARITY

FL IF VS 1-2 VS 1-2 SI 1-2 I 1-3 Flawless Internally Flawless Very Very Slightly Included Very Slightly Included Slightly Included Included

