



ELECTRONIC COPY

LABORATORY GROWN DIAMOND REPORT

May 4, 2026
IGI Report Number LG794635050
Description LABORATORY GROWN DIAMOND
Shape and Cutting Style CUT CORNERED RECTANGULAR MODIFIED BRILLIANT
Measurements 8.11 X 5.96 X 3.77 MM

GRADING RESULTS

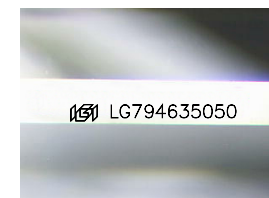
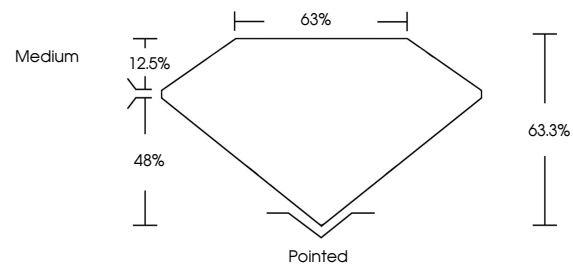
Carat Weight 1.56 CARAT
Color Grade E
Clarity Grade VVS 2

ADDITIONAL GRADING INFORMATION

Polish EXCELLENT
Symmetry EXCELLENT
Fluorescence NONE
Inscription(s) IGI LG794635050

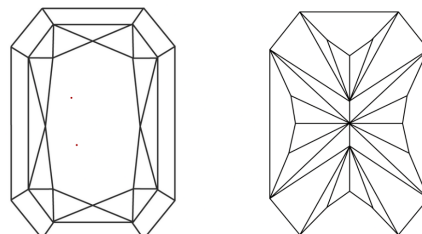
Comments: This Laboratory Grown Diamond was created by Chemical Vapor Deposition (CVD) growth process.
Type IIa

PROPORTIONS



Sample Image Used

CLARITY CHARACTERISTICS



KEY TO SYMBOLS

Red symbols indicate internal characteristics.
Green symbols indicate external characteristics.

COLOR

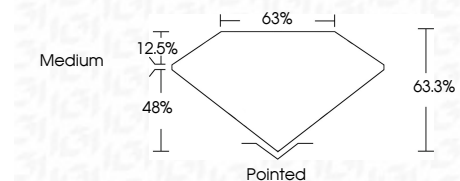
D E F G H I J Faint Very Light Light

CLARITY

FL IF VVS¹⁻² VS¹⁻² SI¹⁻² I¹⁻³
Flawless Internally Flawless Very Very Slightly Included Very Slightly Included Slightly Included Included



May 4, 2026
IGI Report Number LG794635050
Description LABORATORY GROWN DIAMOND
Shape and Cutting Style CUT CORNERED RECTANGULAR MODIFIED BRILLIANT
Measurements 8.11 X 5.96 X 3.77 MM
GRADING RESULTS
Carat Weight 1.56 CARAT
Color Grade E
Clarity Grade VVS 2



ADDITIONAL GRADING INFORMATION

Polish EXCELLENT
Symmetry EXCELLENT
Fluorescence NONE
Inscription(s) IGI LG794635050
Comments: This Laboratory Grown Diamond was created by Chemical Vapor Deposition (CVD) growth process.
Type IIa



May 4, 2026
IGI Report No LG794635050
CUT CORNERED RECT. MODIFIED BRILLIANT
8.11 X 5.96 X 3.77 MM
Carat Weight 1.56 CARAT
Color Grade E
Clarity Grade VVS 2
Depth 48.3%
Table 12.5%
Girdle 65%
Medium
Culet Pointed
Polish EXCELLENT
Symmetry EXCELLENT
Fluorescence NONE
Inscription(s) IGI LG794635050
Comments: This Laboratory Grown Diamond was created by Chemical Vapor Deposition (CVD) growth process.
Type IIa