



ELECTRONIC COPY

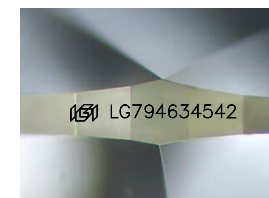
LG794634542
Report verification at igi.org



April 29, 2026
IGI Report Number **LG794634542**
Description **LABORATORY GROWN DIAMOND**

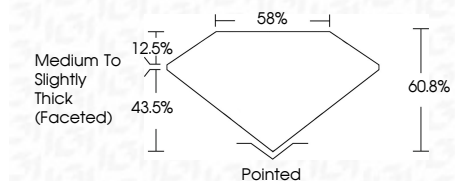
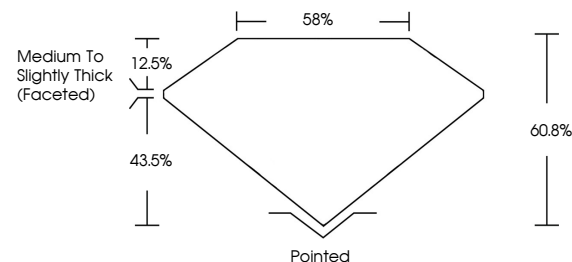
Shape and Cutting Style **OVAL BRILLIANT**
Measurements **13.13 X 8.35 X 5.08 MM**

GRADING RESULTS
Carat Weight **3.57 CARATS**
Color Grade **F**
Clarity Grade **VVS 2**

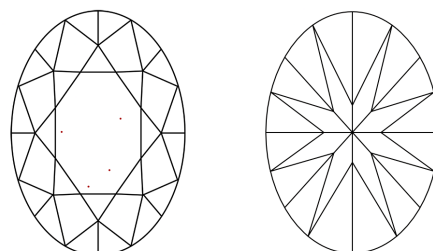


Sample Image Used

PROPORTIONS



CLARITY CHARACTERISTICS



KEY TO SYMBOLS

Red symbols indicate internal characteristics.
Green symbols indicate external characteristics.

COLOR

D E F G H I J Faint Very Light Light

CLARITY

FL	IF	VVS ¹⁻²	VS ¹⁻²	SI ¹⁻²	I ¹⁻³
Flawless	Internally Flawless	Very Very Slightly Included	Very Slightly Included	Slightly Included	Included

ADDITIONAL GRADING INFORMATION

Polish **EXCELLENT**
Symmetry **EXCELLENT**
Fluorescence **NONE**
Inscription(s) **IGI LG794634542**
Comments: This Laboratory Grown Diamond was created by Chemical Vapor Deposition (CVD) growth process. Type IIa



April 29, 2026
IGI Report No LG794634542
OVAL BRILLIANT
13.13 X 8.35 X 5.08 MM
3.57 CARATS
F
VVS 2
60.8%
43.5%
85%
Medium to Slightly Thick (Faceted)
Pointed
EXCELLENT
EXCELLENT
NONE
IGI LG794634542

Comments: This Laboratory Grown Diamond was created by Chemical Vapor Deposition (CVD) growth process. Type IIa