



ELECTRONIC COPY

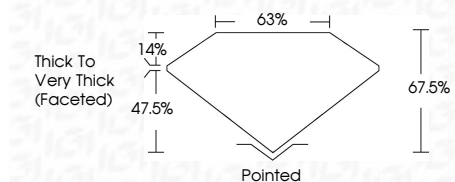
LG794634406
Report verification at igi.org



April 29, 2026
IGI Report Number **LG794634406**
Description **LABORATORY GROWN DIAMOND**
Shape and Cutting Style **SQUARE CUSHION BRILLIANT**
Measurements **8.25 X 7.97 X 5.38 MM**

GRADING RESULTS

Carat Weight **2.52 CARATS**
Color Grade **F**
Clarity Grade **VVS 2**



ADDITIONAL GRADING INFORMATION

Polish **EXCELLENT**
Symmetry **EXCELLENT**
Fluorescence **NONE**
Inscription(s) **IGI LG794634406**
Comments: This Laboratory Grown Diamond was created by Chemical Vapor Deposition (CVD) growth process. Type IIa



April 29, 2026
IGI Report No **LG794634406**
SQUARE CUSHION BRILLIANT
8.25 X 7.97 X 5.38 MM
2.52 CARATS
F
VVS 2
67.5%
63%
Thick to Very Thick (Faceted)
Pointed
EXCELLENT
EXCELLENT
NONE
IGI LG794634406
Comments: This Laboratory Grown Diamond was created by Chemical Vapor Deposition (CVD) growth process. Type IIa

LABORATORY GROWN DIAMOND REPORT

April 29, 2026
IGI Report Number **LG794634406**
Description **LABORATORY GROWN DIAMOND**
Shape and Cutting Style **SQUARE CUSHION BRILLIANT**
Measurements **8.25 X 7.97 X 5.38 MM**

GRADING RESULTS

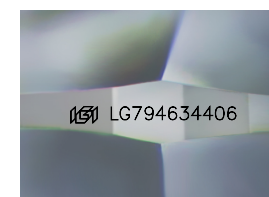
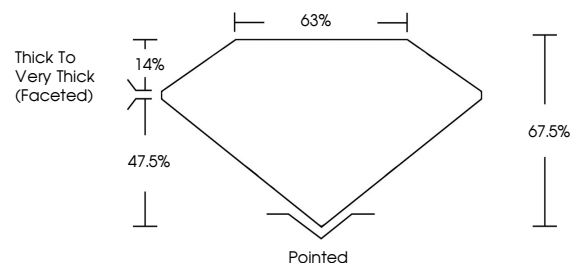
Carat Weight **2.52 CARATS**
Color Grade **F**
Clarity Grade **VVS 2**

ADDITIONAL GRADING INFORMATION

Polish **EXCELLENT**
Symmetry **EXCELLENT**
Fluorescence **NONE**
Inscription(s) **IGI LG794634406**

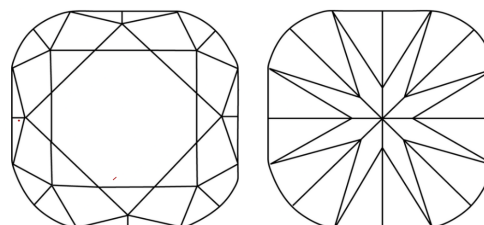
Comments: This Laboratory Grown Diamond was created by Chemical Vapor Deposition (CVD) growth process. Type IIa

PROPORTIONS



Sample Image Used

CLARITY CHARACTERISTICS



KEY TO SYMBOLS

Red symbols indicate internal characteristics.
Green symbols indicate external characteristics.

COLOR

D E F G H I J Faint Very Light Light

CLARITY

FL	IF	VVS ¹⁻²	VS ¹⁻²	SI ¹⁻²	I ¹⁻³
Flawless	Internally Flawless	Very Very Slightly Included	Very Slightly Included	Slightly Included	Included

