



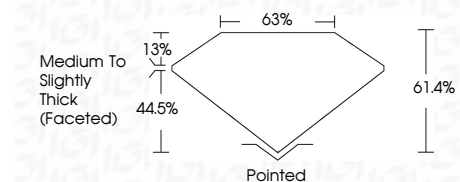
ELECTRONIC COPY

LG794634402
Report verification at igi.org



April 29, 2026
IGI Report Number **LG794634402**
Description **LABORATORY GROWN DIAMOND**
Shape and Cutting Style **OVAL BRILLIANT**
Measurements **10.01 X 6.35 X 3.90 MM**

GRADING RESULTS
Carat Weight **1.57 CARAT**
Color Grade **F**
Clarity Grade **VVS 2**



ADDITIONAL GRADING INFORMATION
Polish **EXCELLENT**
Symmetry **EXCELLENT**
Fluorescence **NONE**
Inscription(s) **IGI LG794634402**
Comments: This Laboratory Grown Diamond was created by Chemical Vapor Deposition (CVD) growth process. Type IIa



April 29, 2026
IGI Report No LG794634402
OVAL BRILLIANT
1.57 CARAT
F
10.01 X 6.35 X 3.90 MM
Carat Weight
Color Grade
Clarity Grade
Depth
Table
Girdle
Medium to Slightly Thick (Faceted)
Pointed
EXCELLENT
EXCELLENT
NONE
IGI LG794634402
Inscription(s)
Comments: This Laboratory Grown Diamond was created by Chemical Vapor Deposition (CVD) growth process. Type IIa

LABORATORY GROWN DIAMOND REPORT

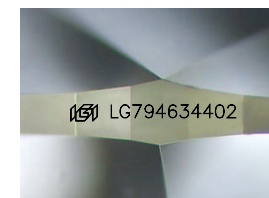
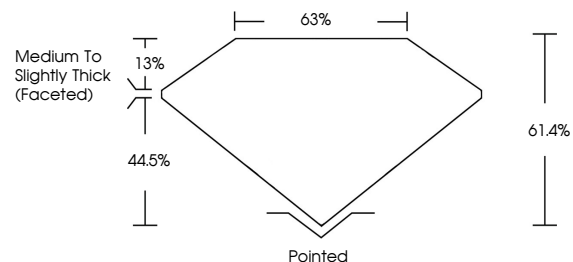
April 29, 2026
IGI Report Number **LG794634402**
Description **LABORATORY GROWN DIAMOND**
Shape and Cutting Style **OVAL BRILLIANT**
Measurements **10.01 X 6.35 X 3.90 MM**

GRADING RESULTS
Carat Weight **1.57 CARAT**
Color Grade **F**
Clarity Grade **VVS 2**

ADDITIONAL GRADING INFORMATION
Polish **EXCELLENT**
Symmetry **EXCELLENT**
Fluorescence **NONE**
Inscription(s) **IGI LG794634402**

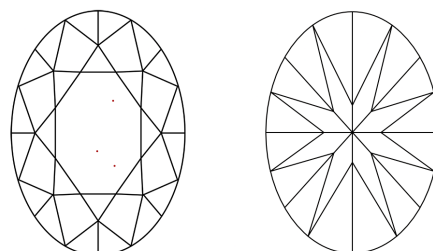
Comments: This Laboratory Grown Diamond was created by Chemical Vapor Deposition (CVD) growth process. Type IIa

PROPORTIONS



Sample Image Used

CLARITY CHARACTERISTICS



KEY TO SYMBOLS

Red symbols indicate internal characteristics.
Green symbols indicate external characteristics.

COLOR

D E F G H I J Faint Very Light Light

CLARITY

FL	IF	VVS ¹⁻²	VS ¹⁻²	SI ¹⁻²	I ¹⁻³
Flawless	Internally Flawless	Very Very Slightly Included	Very Slightly Included	Slightly Included	Included

