



ELECTRONIC COPY

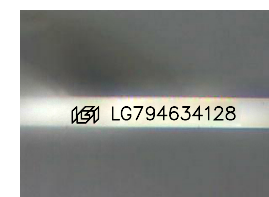
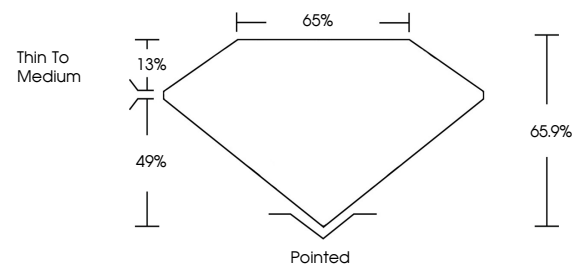
LG794634128
Report verification at igi.org



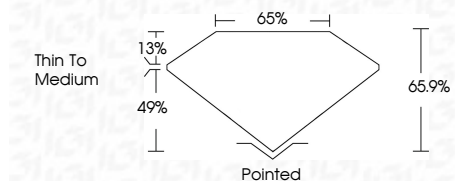
May 2, 2026
IGI Report Number LG794634128
Description LABORATORY GROWN DIAMOND
Shape and Cutting Style CUT CORNERED RECTANGULAR MODIFIED BRILLIANT
Measurements 7.02 X 4.99 X 3.29 MM
GRADING RESULTS
Carat Weight 1.07 CARAT
Color Grade FANCY VIVID YELLOW
Clarity Grade VS 1

May 2, 2026
IGI Report Number LG794634128
Description LABORATORY GROWN DIAMOND
Shape and Cutting Style CUT CORNERED RECTANGULAR MODIFIED BRILLIANT
Measurements 7.02 X 4.99 X 3.29 MM

PROPORTIONS



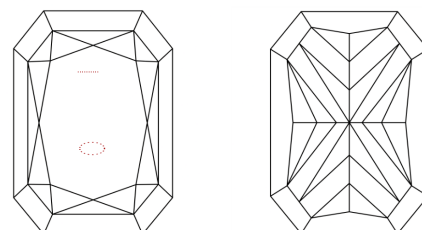
Sample Image Used



GRADING RESULTS

Carat Weight 1.07 CARAT
Color Grade FANCY VIVID YELLOW
Clarity Grade VS 1

CLARITY CHARACTERISTICS



KEY TO SYMBOLS

Red symbols indicate internal characteristics.
Green symbols indicate external characteristics.

ADDITIONAL GRADING INFORMATION

Polish VERY GOOD
Symmetry VERY GOOD
Fluorescence NONE
Inscription(s) LG794634128

COLOR

D E F G H I J Faint Very Light Light

CLARITY

FL IF VS 1-2 VS 2-3 SI 1-2 SI 2-3 I 1-3
Flawless Internally Flawless Very Very Slightly Included Very Slightly Included Slightly Included Included

ADDITIONAL GRADING INFORMATION

Polish VERY GOOD
Symmetry VERY GOOD
Fluorescence NONE
Inscription(s) LG794634128
Comments: This Laboratory Grown Diamond was created by Chemical Vapor Deposition (CVD) growth process.



May 2, 2026
IGI Report No LG794634128
CUT CORNERED RECT. MODIFIED BRILLIANT
7.02 X 4.99 X 3.29 MM
1.07 CARAT
FANCY VIVID YELLOW
VS 1
65.9%
Thin To Medium
Pointed
Polish VERY GOOD
Symmetry VERY GOOD
Fluorescence NONE
Inscription(s) LG794634128
Comments: This Laboratory Grown Diamond was created by Chemical Vapor Deposition (CVD) growth process.