



ELECTRONIC COPY

LG794634049
Report verification at igi.org



April 30, 2026

IGI Report Number **LG794634049**

Description **LABORATORY GROWN DIAMOND**

Shape and Cutting Style **EMERALD CUT**

Measurements **8.69 X 5.97 X 4.04 MM**

GRADING RESULTS

Carat Weight **2.03 CARATS**

Color Grade **FANCY BLuish GREEN**

Clarity Grade **VS 1**

April 30, 2026
IGI Report Number **LG794634049**
Description **LABORATORY GROWN DIAMOND**
Shape and Cutting Style **EMERALD CUT**
Measurements **8.69 X 5.97 X 4.04 MM**

GRADING RESULTS

Carat Weight **2.03 CARATS**

Color Grade **FANCY BLuish GREEN**

Clarity Grade **VS 1**

ADDITIONAL GRADING INFORMATION

Polish **VERY GOOD**

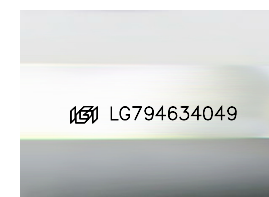
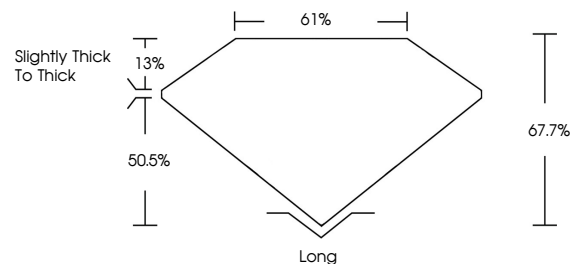
Symmetry **EXCELLENT**

Fluorescence **NONE**

Inscription(s) **IGI LG794634049**

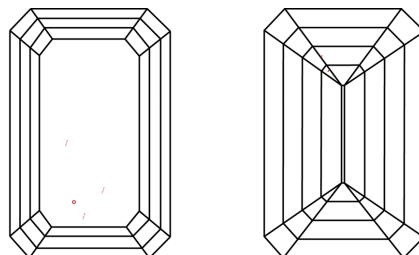
Comments: This Laboratory Grown Diamond was created by Chemical Vapor Deposition (CVD) growth process.
Indications of post-growth treatment.

PROPORTIONS



Sample Image Used

CLARITY CHARACTERISTICS



KEY TO SYMBOLS

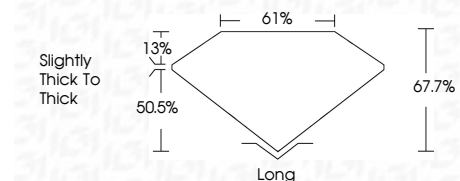
Red symbols indicate internal characteristics.
Green symbols indicate external characteristics.

COLOR

D E F G H I J Faint Very Light Light

CLARITY

FL	IF	VS ¹⁻²	VS ¹⁻²	SI ¹⁻²	I ¹⁻³
Flawless	Internally Flawless	Very Very Slightly Included	Very Slightly Included	Slightly Included	Included



ADDITIONAL GRADING INFORMATION

Polish **VERY GOOD**

Symmetry **EXCELLENT**

Fluorescence **NONE**

Inscription(s) **IGI LG794634049**

Comments: This Laboratory Grown Diamond was created by Chemical Vapor Deposition (CVD) growth process.
Indications of post-growth treatment.



April 30, 2026
IGI Report No **LG794634049**
EMERALD CUT
Carat Weight **2.03 CARATS**
Color Grade **FANCY BLuish GREEN**
Clarity Grade **VS 1**
Depth **67.7%**
Table **61%**
Girdle **Slightly thick to thick**
Culet **Long**
Polish **VERY GOOD**
Symmetry **EXCELLENT**
Fluorescence **NONE**
Inscription(s) **IGI LG794634049**
Comments: This Laboratory Grown Diamond was created by Chemical Vapor Deposition (CVD) growth process.
Indications of post-growth treatment.