



ELECTRONIC COPY

LG794633592
Report verification at igi.org



April 28, 2026
IGI Report Number **LG794633592**
Description **LABORATORY GROWN DIAMOND**

Shape and Cutting Style **PEAR MODIFIED BRILLIANT**
Measurements **12.58 X 6.92 X 4.79 MM**

GRADING RESULTS
Carat Weight **3.05 CARATS**
Color Grade **FANCY VIVID YELLOW**
Clarity Grade **VS 1**

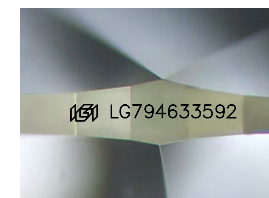
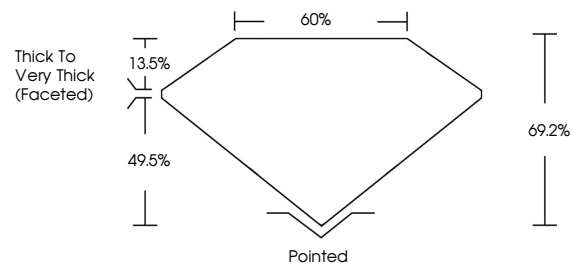
April 28, 2026
IGI Report Number **LG794633592**
Description **LABORATORY GROWN DIAMOND**
Shape and Cutting Style **PEAR MODIFIED BRILLIANT**
Measurements **12.58 X 6.92 X 4.79 MM**

GRADING RESULTS
Carat Weight **3.05 CARATS**
Color Grade **FANCY VIVID YELLOW**
Clarity Grade **VS 1**

ADDITIONAL GRADING INFORMATION
Polish **EXCELLENT**
Symmetry **VERY GOOD**
Fluorescence **NONE**
Inscription(s) **IGI LG794633592**

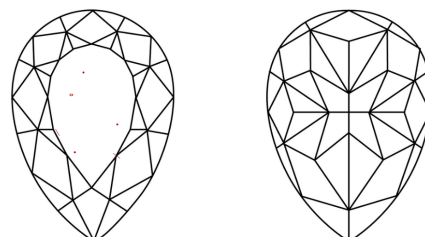
Comments: This Laboratory Grown Diamond was created by Chemical Vapor Deposition (CVD) growth process.

PROPORTIONS



Sample Image Used

CLARITY CHARACTERISTICS



KEY TO SYMBOLS

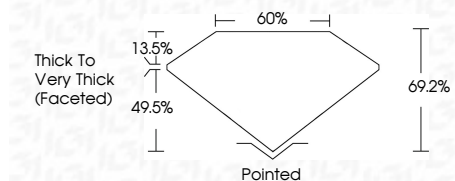
Red symbols indicate internal characteristics.
Green symbols indicate external characteristics.

COLOR

D E F G H I J Faint Very Light Light

CLARITY

| FL | IF | VS ¹⁻² | VS ¹⁻² | SI ¹⁻² | I ¹⁻³ |
|----------|---------------------|-----------------------------|------------------------|-------------------|------------------|
| Flawless | Internally Flawless | Very Very Slightly Included | Very Slightly Included | Slightly Included | Included |



ADDITIONAL GRADING INFORMATION

Polish **EXCELLENT**
Symmetry **VERY GOOD**
Fluorescence **NONE**
Inscription(s) **IGI LG794633592**
Comments: This Laboratory Grown Diamond was created by Chemical Vapor Deposition (CVD) growth process.



April 28, 2026
IGI Report No LG794633592
PEAR MODIFIED BRILLIANT
12.58 X 6.92 X 4.79 MM
3.05 CARATS
FANCY VIVID YELLOW
VS 1
69.2%
49.5%
Thick to Very Thick (Faceted)
Pointed
EXCELLENT
VERY GOOD
NONE
IGI LG794633592
Comments: This Laboratory Grown Diamond was created by Chemical Vapor Deposition (CVD) growth process.