



ELECTRONIC COPY

LG794633447
Report verification at igi.org

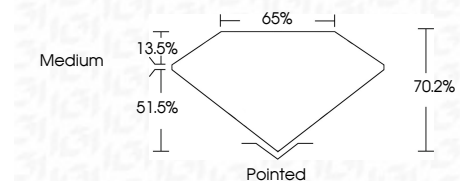


May 15, 2026
IGI Report Number **LG794633447**
Description **LABORATORY GROWN DIAMOND**

Shape and Cutting Style **CUT CORNERED
RECTANGULAR MODIFIED
BRILLIANT**

Measurements **9.23 X 6.14 X 4.31 MM**

GRADING RESULTS
Carat Weight **2.39 CARATS**
Color Grade **FANCY INTENSE YELLOW**
Clarity Grade **VS 2**



ADDITIONAL GRADING INFORMATION
Polish **EXCELLENT**
Symmetry **EXCELLENT**
Fluorescence **NONE**
Inscription(s) **IGI LG794633447**

Comments: This Laboratory Grown Diamond was created by Chemical Vapor Deposition (CVD) growth process.



May 15, 2026
IGI Report No LG794633447
CUT CORNERED RECT. MODIFIED BRILLIANT
9.23 X 6.14 X 4.31 MM
2.39 CARATS
FANCY INTENSE YELLOW
VS 2
70.2%
51.5%
13.5%
Medium
Pointed
EXCELLENT
EXCELLENT
NONE
IGI LG794633447
Comments: This Laboratory Grown Diamond was created by Chemical Vapor Deposition (CVD) growth process.

LABORATORY GROWN DIAMOND REPORT

May 15, 2026
IGI Report Number **LG794633447**
Description **LABORATORY GROWN DIAMOND**
Shape and Cutting Style **CUT CORNERED RECTANGULAR
MODIFIED BRILLIANT**
Measurements **9.23 X 6.14 X 4.31 MM**

GRADING RESULTS

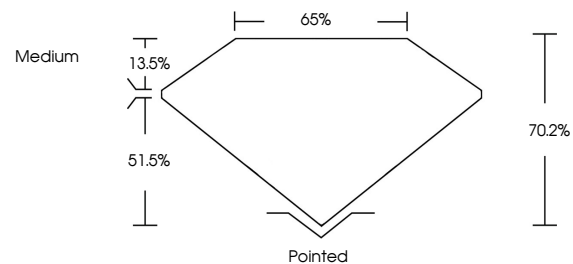
Carat Weight **2.39 CARATS**
Color Grade **FANCY INTENSE YELLOW**
Clarity Grade **VS 2**

ADDITIONAL GRADING INFORMATION

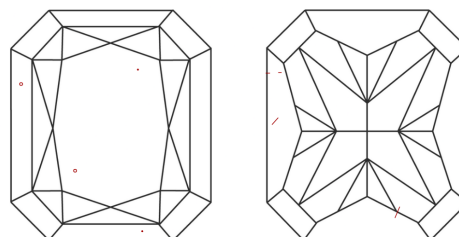
Polish **EXCELLENT**
Symmetry **EXCELLENT**
Fluorescence **NONE**
Inscription(s) **IGI LG794633447**

Comments: This Laboratory Grown Diamond was created by Chemical Vapor Deposition (CVD) growth process.

PROPORTIONS

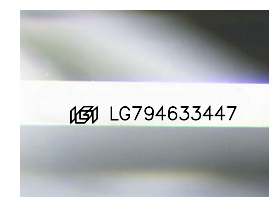


CLARITY CHARACTERISTICS



KEY TO SYMBOLS

Red symbols indicate internal characteristics.
Green symbols indicate external characteristics.



Sample Image Used

COLOR

D E F G H I J Faint Very Light Light

CLARITY

FL	IF	VS ¹⁻²	VS ¹⁻²	SI ¹⁻²	I ¹⁻³
Flawless	Internally Flawless	Very Very Slightly Included	Very Slightly Included	Slightly Included	Included

