



ELECTRONIC COPY

LG794632002
Report verification at igi.org



June 4, 2026
IGI Report Number **LG794632002**
Description **LABORATORY GROWN DIAMOND**
Shape and Cutting Style **ROUND BRILLIANT**
Measurements **8.61 - 8.69 X 5.47 MM**
GRADING RESULTS
Carat Weight **2.52 CARATS**
Color Grade **LIGHT BROWNISH YELLOW**
Clarity Grade **VVS 2**
Cut Grade **EXCELLENT**

June 4, 2026
IGI Report Number **LG794632002**
Description **LABORATORY GROWN DIAMOND**
Shape and Cutting Style **ROUND BRILLIANT**
Measurements **8.61 - 8.69 X 5.47 MM**

GRADING RESULTS

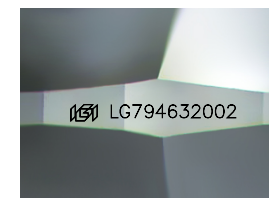
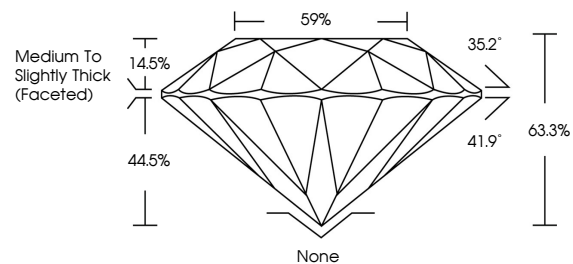
Carat Weight **2.52 CARATS**
Color Grade **LIGHT BROWNISH YELLOW**
Clarity Grade **VVS 2**
Cut Grade **EXCELLENT**

ADDITIONAL GRADING INFORMATION

Polish **EXCELLENT**
Symmetry **EXCELLENT**
Fluorescence **VERY SLIGHT**
Inscription(s) **LG794632002**

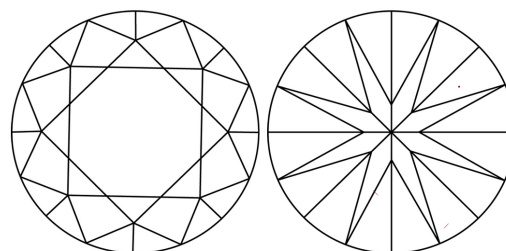
Comments: This Laboratory Grown Diamond was created by Chemical Vapor Deposition (CVD) growth process.
Type IIa

PROPORTIONS



Sample Image Used

CLARITY CHARACTERISTICS



KEY TO SYMBOLS

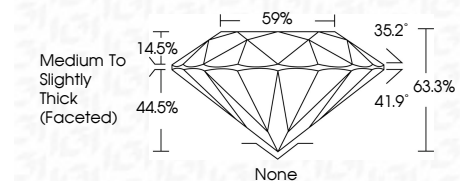
Red symbols indicate internal characteristics.
Green symbols indicate external characteristics.

COLOR

D E F G H I J Faint Very Light Light

CLARITY

FL	IF	VVS ¹⁻²	VS ¹⁻²	SI ¹⁻²	I ¹⁻³
Flawless	Internally Flawless	Very Very Slightly Included	Very Slightly Included	Slightly Included	Included



ADDITIONAL GRADING INFORMATION

Polish **EXCELLENT**
Symmetry **EXCELLENT**
Fluorescence **VERY SLIGHT**
Inscription(s) **LG794632002**
Comments: This Laboratory Grown Diamond was created by Chemical Vapor Deposition (CVD) growth process.
Type IIa



IGI



June 4, 2026
IGI Report No LG794632002
ROUND BRILLIANT
8.61 - 8.69 X 5.47 MM
2.52 CARATS
LIGHT BROWNISH YELLOW
Color Grade
VVS 2
Clarity Grade
EXCELLENT
Depth 63.3%
Table 59%
Medium To Slightly Thick (Faceted)
None
None
EXCELLENT
EXCELLENT
VERY SLIGHT
EXCELLENT
Inscriptions(s)
IGI LG794632002
Comments: This Laboratory Grown Diamond was created by Chemical Vapor Deposition (CVD) growth process.
Type IIa