



ELECTRONIC COPY

LG794631800
Report verification at igi.org



May 28, 2026
IGI Report Number **LG794631800**
Description **LABORATORY GROWN DIAMOND**
Shape and Cutting Style **HEXAGONAL MODIFIED STEP CUT**
Measurements **10.29 X 6.35 X 4.23 MM**
GRADING RESULTS
Carat Weight **2.09 CARATS**
Color Grade **FANCY INTENSE BLUE**
Clarity Grade **VVS 2**

LABORATORY GROWN DIAMOND REPORT

May 28, 2026
IGI Report Number **LG794631800**
Description **LABORATORY GROWN DIAMOND**
Shape and Cutting Style **HEXAGONAL MODIFIED STEP CUT**
Measurements **10.29 X 6.35 X 4.23 MM**

GRADING RESULTS

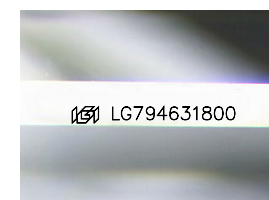
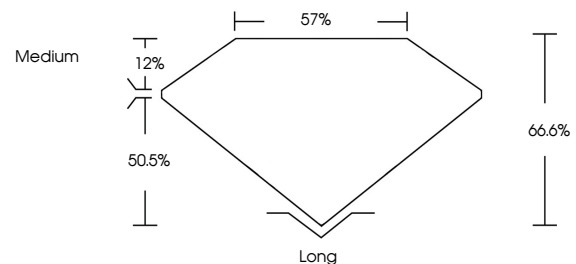
Carat Weight **2.09 CARATS**
Color Grade **FANCY INTENSE BLUE**
Clarity Grade **VVS 2**

ADDITIONAL GRADING INFORMATION

Polish **EXCELLENT**
Symmetry **EXCELLENT**
Fluorescence **NONE**
Inscription(s) **IGI LG794631800**

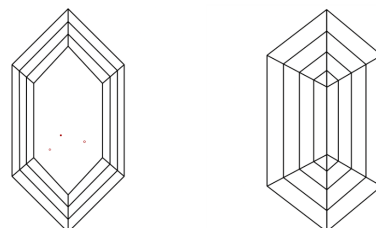
Comments: This Laboratory Grown Diamond was created by Chemical Vapor Deposition (CVD) growth process.
Indications of post-growth treatment.

PROPORTIONS



Sample Image Used

CLARITY CHARACTERISTICS



KEY TO SYMBOLS

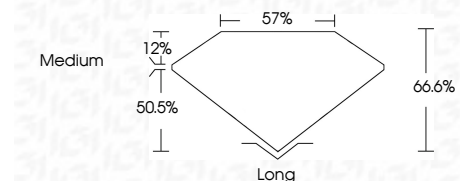
Red symbols indicate internal characteristics.
Green symbols indicate external characteristics.

COLOR

D E F G H I J Faint Very Light Light

CLARITY

FL	IF	VVS ¹⁻²	VS ¹⁻²	SI ¹⁻²	I ¹⁻³
Flawless	Internally Flawless	Very Very Slightly Included	Very Slightly Included	Slightly Included	Included



ADDITIONAL GRADING INFORMATION

Polish **EXCELLENT**
Symmetry **EXCELLENT**
Fluorescence **NONE**
Inscription(s) **IGI LG794631800**
Comments: This Laboratory Grown Diamond was created by Chemical Vapor Deposition (CVD) growth process.
Indications of post-growth treatment.



May 28, 2026
IGI Report No LG794631800
HEXAGONAL MODIFIED STEP CUT
2.09 CARATS
FANCY INTENSE BLUE
VVS 2
66.6%
57%
Medium
Long
EXCELLENT
EXCELLENT
NONE
IGI LG794631800
Comments: This Laboratory Grown Diamond was created by Chemical Vapor Deposition (CVD) growth process.
Indications of post-growth treatment.