



**ELECTRONIC COPY**

LG794631117  
Report verification at igi.org



May 14, 2026  
IGI Report Number **LG794631117**  
Description **LABORATORY GROWN DIAMOND**  
Shape and Cutting Style **ROUND BRILLIANT**  
Measurements **11.10 - 11.14 X 6.70 MM**  
**GRADING RESULTS**  
Carat Weight **5.07 CARATS**  
Color Grade **FANCY PINK**  
Clarity Grade **VVS 2**  
Cut Grade **EXCELLENT**

May 14, 2026  
IGI Report Number **LG794631117**  
Description **LABORATORY GROWN DIAMOND**  
Shape and Cutting Style **ROUND BRILLIANT**  
Measurements **11.10 - 11.14 X 6.70 MM**

**GRADING RESULTS**

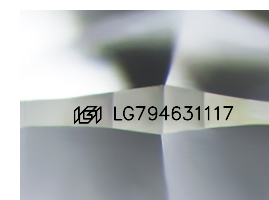
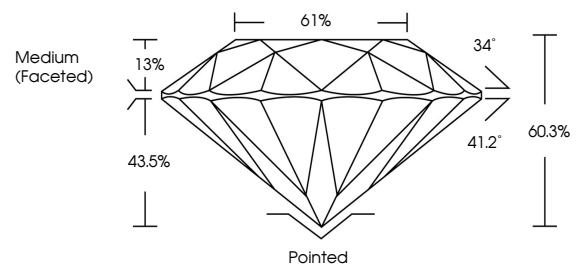
Carat Weight **5.07 CARATS**  
Color Grade **FANCY PINK**  
Clarity Grade **VVS 2**  
Cut Grade **EXCELLENT**

**ADDITIONAL GRADING INFORMATION**

Polish **EXCELLENT**  
Symmetry **EXCELLENT**  
Fluorescence **STRONG**  
Inscription(s) **LG794631117**

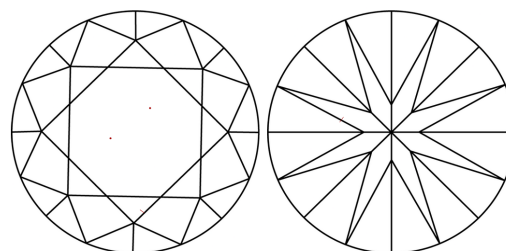
Comments: This Laboratory Grown Diamond was created by Chemical Vapor Deposition (CVD) growth process.  
Indications of post-growth treatment.

**PROPORTIONS**



Sample Image Used

**CLARITY CHARACTERISTICS**



**KEY TO SYMBOLS**

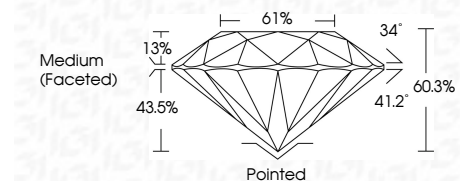
Red symbols indicate internal characteristics.  
Green symbols indicate external characteristics.

**COLOR**

D E F G H I J Faint Very Light Light

**CLARITY**

FL	IF	VVS <sup>1-2</sup>	VS <sup>1-2</sup>	SI <sup>1-2</sup>	I <sup>1-3</sup>
Flawless	Internally Flawless	Very Very Slightly Included	Very Slightly Included	Slightly Included	Included



**ADDITIONAL GRADING INFORMATION**

Polish **EXCELLENT**  
Symmetry **EXCELLENT**  
Fluorescence **STRONG**  
Inscription(s) **LG794631117**  
Comments: This Laboratory Grown Diamond was created by Chemical Vapor Deposition (CVD) growth process.  
Indications of post-growth treatment.



**IGI**



May 14, 2026  
IGI Report No **LG794631117**  
**ROUND BRILLIANT**  
5.07 CARATS  
FANCY PINK  
VVS 2  
EXCELLENT  
60.3%  
61%  
Medium (Faceted)  
Pointed  
EXCELLENT  
EXCELLENT  
STRONG  
EXCELLENT  
 LG794631117  
Comments: This Laboratory Grown Diamond was created by Chemical Vapor Deposition (CVD) growth process.  
Indications of post-growth treatment.