



ELECTRONIC COPY

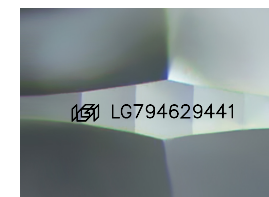
LG794629441
Report verification at igi.org



June 26, 2026
IGI Report Number **LG794629441**
Description **LABORATORY GROWN DIAMOND**
Shape and Cutting Style **OLD EUROPEAN CUT**
Measurements **6.38 - 6.43 X 4.02 MM**

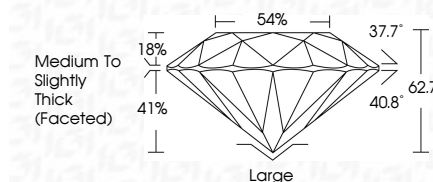
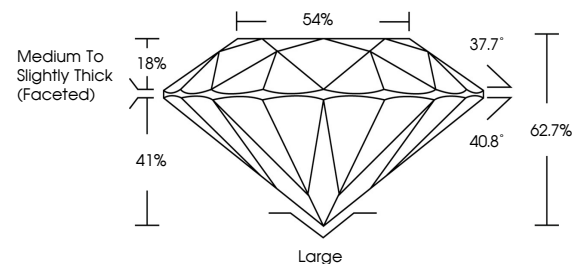
GRADING RESULTS

Carat Weight **1.08 CARAT**
Color Grade **D**
Clarity Grade **FLAWLESS**

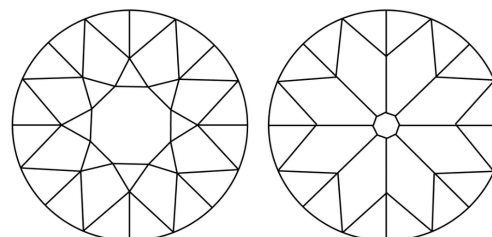


Sample Image Used

PROPORTIONS



CLARITY CHARACTERISTICS



KEY TO SYMBOLS

Red symbols indicate internal characteristics.
Green symbols indicate external characteristics.

COLOR

D E F G H I J Faint Very Light Light

CLARITY

FL	IF	VS ¹⁻²	VS ¹⁻²	SI ¹⁻²	I ¹⁻³
Flawless	Internally Flawless	Very Very Slightly Included	Very Slightly Included	Slightly Included	Included

ADDITIONAL GRADING INFORMATION

Polish **EXCELLENT**
Symmetry **EXCELLENT**
Fluorescence **NONE**
Inscription(s) **IGI LG794629441**
Comments: As Grown - No indication of post-growth treatment.
This Laboratory Grown Diamond was created by High Pressure High Temperature (HPHT) growth process.
Type II



June 26, 2026
IGI Report No LG794629441
OLD EUROPEAN CUT
6.38 - 6.43 X 4.02 MM
Carat Weight 1.08 CARAT
Color Grade D
Clarity Grade FLAWLESS
Depth 62.7%
Table 54%
Girdle Medium to Slightly Thick (Faceted)
Culet Large
Polish EXCELLENT
Symmetry EXCELLENT
Fluorescence NONE
Inscription(s) IGI LG794629441

Comments: As Grown - No indication of post-growth treatment.
This Laboratory Grown Diamond was created by High Pressure High Temperature (HPHT) growth process.
Type II