



ELECTRONIC COPY

LG794629404
Report verification at igi.org



June 27, 2026
IGI Report Number **LG794629404**

Description **LABORATORY GROWN DIAMOND**

Shape and Cutting Style **ANTIQUÉ CUSHION CUT**

Measurements **8.21 X 5.34 X 3.31 MM**

GRADING RESULTS

Carat Weight **1.10 CARAT**

Color Grade **FANCY VIVID GREEN**

Clarity Grade **VVS 2**

June 27, 2026
IGI Report Number **LG794629404**
Description **LABORATORY GROWN DIAMOND**
Shape and Cutting Style **ANTIQUÉ CUSHION CUT**
Measurements **8.21 X 5.34 X 3.31 MM**

GRADING RESULTS

Carat Weight **1.10 CARAT**

Color Grade **FANCY VIVID GREEN**

Clarity Grade **VVS 2**

ADDITIONAL GRADING INFORMATION

Polish **VERY GOOD**

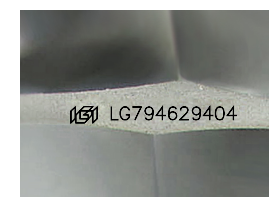
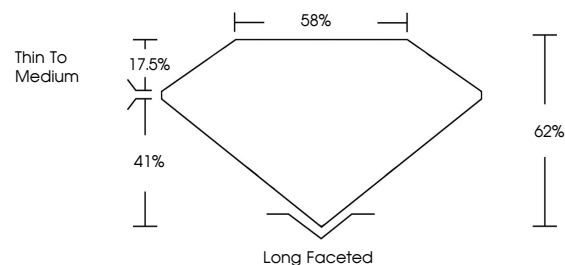
Symmetry **EXCELLENT**

Fluorescence **VERY SLIGHT**

Inscription(s) **IGI LG794629404**

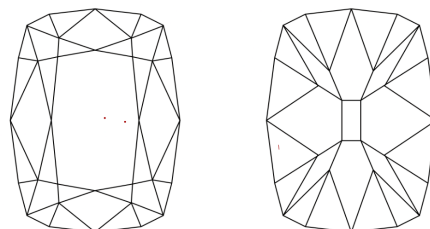
Comments: This Laboratory Grown Diamond was created by Chemical Vapor Deposition (CVD) growth process.
Indications of post-growth treatment.

PROPORTIONS



Sample Image Used

CLARITY CHARACTERISTICS



KEY TO SYMBOLS

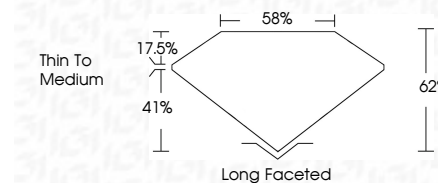
Red symbols indicate internal characteristics.
Green symbols indicate external characteristics.

COLOR

D E F G H I J Faint Very Light Light

CLARITY

FL	IF	VVS ¹⁻²	VS ¹⁻²	SI ¹⁻²	I ¹⁻³
Flawless	Internally Flawless	Very Very Slightly Included	Very Slightly Included	Slightly Included	Included



ADDITIONAL GRADING INFORMATION

Polish **VERY GOOD**

Symmetry **EXCELLENT**

Fluorescence **VERY SLIGHT**

Inscription(s) **IGI LG794629404**

Comments: This Laboratory Grown Diamond was created by Chemical Vapor Deposition (CVD) growth process.
Indications of post-growth treatment.



June 27, 2026
IGI Report No **LG794629404**
ANTIQUÉ CUSHION CUT
8.21 X 5.34 X 3.31 MM
1.10 CARAT
FANCY VIVID GREEN
VVS 2
62%
58%
Thin To Medium
Long Faceted
VERY GOOD
EXCELLENT
VERY SLIGHT
IGI LG794629404
Comments: This Laboratory Grown Diamond was created by Chemical Vapor Deposition (CVD) growth process.
Indications of post-growth treatment.