



**ELECTRONIC COPY**

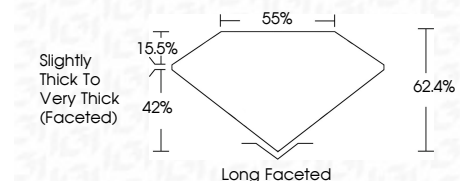
LG794629270  
Report verification at igi.org



June 19, 2026  
IGI Report Number **LG794629270**  
Description **LABORATORY GROWN DIAMOND**  
Shape and Cutting Style **CUSHION ANTIQUE BRILLIANT**  
Measurements **8.95 X 5.98 X 3.73 MM**

**GRADING RESULTS**

Carat Weight **1.70 CARAT**  
Color Grade **D**  
Clarity Grade **VVS 2**

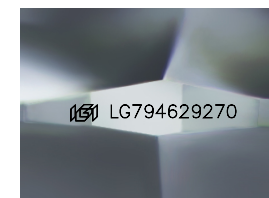


**ADDITIONAL GRADING INFORMATION**

Polish **EXCELLENT**  
Symmetry **EXCELLENT**  
Fluorescence **NONE**  
Inscription(s) **(IGI) LG794629270**  
Comments: As Grown - No indication of post-growth treatment.  
This Laboratory Grown Diamond was created by High Pressure High Temperature (HPHT) growth process.  
Type II

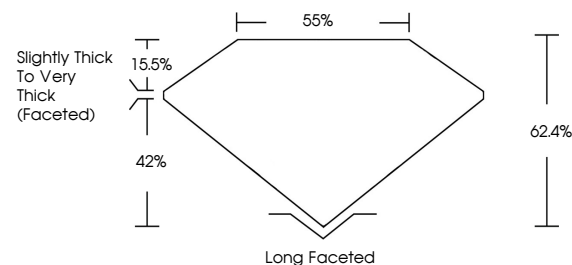


June 19, 2026  
IGI Report No **LG794629270**  
**CUSHION ANTIQUE BRILLIANT**  
8.95 X 5.98 X 3.73 MM  
Carat Weight **1.70 CARAT**  
Color Grade **D**  
Clarity Grade **VVS 2**  
Depth **62.4%**  
Table **15.5%**  
Girdle **Slightly Thick To Very Thick (Faceted)**  
Culet **Long Faceted**  
Polish **EXCELLENT**  
Symmetry **EXCELLENT**  
Fluorescence **NONE**  
Inscription(s) **(IGI) LG794629270**  
Comments: As Grown - No indication of post-growth treatment.  
This Laboratory Grown Diamond was created by High Pressure High Temperature (HPHT) growth process.  
Type II

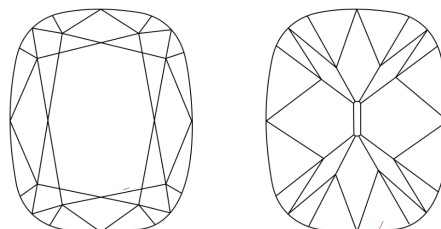


Sample Image Used

**PROPORTIONS**



**CLARITY CHARACTERISTICS**



**KEY TO SYMBOLS**

Red symbols indicate internal characteristics.  
Green symbols indicate external characteristics.

**COLOR**

D E F G H I J Faint Very Light Light

**CLARITY**

FL	IF	VVS <sup>1-2</sup>	VS <sup>1-2</sup>	SI <sup>1-2</sup>	I <sup>1-3</sup>
Flawless	Internally Flawless	Very Very Slightly Included	Very Slightly Included	Slightly Included	Included

