



**ELECTRONIC COPY**

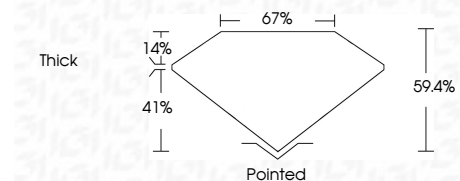
LG794629180  
Report verification at igi.org



June 18, 2026  
IGI Report Number **LG794629180**  
Description **LABORATORY GROWN DIAMOND**  
Shape and Cutting Style **OCTAGONAL STEP CUT**  
Measurements **6.35 X 6.45 X 3.83 MM**

**GRADING RESULTS**

Carat Weight **1.25 CARAT**  
Color Grade **E**  
Clarity Grade **VVS 2**



**ADDITIONAL GRADING INFORMATION**

Polish **EXCELLENT**  
Symmetry **EXCELLENT**  
Fluorescence **NONE**  
Inscription(s) **(IGI) LG794629180**  
Comments: As Grown - No indication of post-growth treatment.  
This Laboratory Grown Diamond was created by High Pressure High Temperature (HPHT) growth process.  
Type II



June 18, 2026  
IGI Report No LG794629180  
OCTAGONAL STEP CUT  
6.35 X 6.45 X 3.83 MM  
1.25 CARAT  
E  
VVS 2  
67%  
59.4%  
Thick  
Pointed  
EXCELLENT  
EXCELLENT  
NONE  
(IGI) LG794629180  
Comments: As Grown - No indication of post-growth treatment.  
This Laboratory Grown Diamond was created by High Pressure High Temperature (HPHT) growth process.  
Type II

June 18, 2026  
IGI Report Number **LG794629180**  
Description **LABORATORY GROWN DIAMOND**  
Shape and Cutting Style **OCTAGONAL STEP CUT**  
Measurements **6.35 X 6.45 X 3.83 MM**

**GRADING RESULTS**

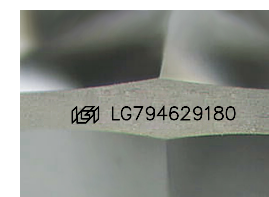
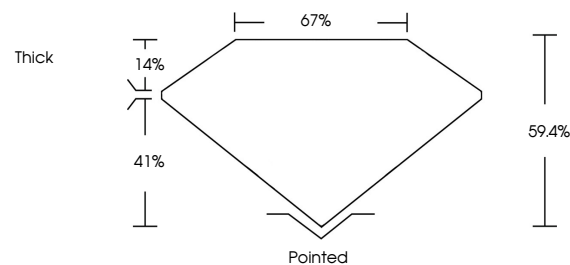
Carat Weight **1.25 CARAT**  
Color Grade **E**  
Clarity Grade **VVS 2**

**ADDITIONAL GRADING INFORMATION**

Polish **EXCELLENT**  
Symmetry **EXCELLENT**  
Fluorescence **NONE**  
Inscription(s) **(IGI) LG794629180**

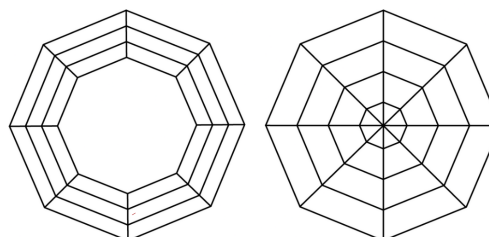
Comments: As Grown - No indication of post-growth treatment.  
This Laboratory Grown Diamond was created by High Pressure High Temperature (HPHT) growth process.  
Type II

**PROPORTIONS**



Sample Image Used

**CLARITY CHARACTERISTICS**



**KEY TO SYMBOLS**

Red symbols indicate internal characteristics.  
Green symbols indicate external characteristics.

**COLOR**

D E F G H I J Faint Very Light Light

**CLARITY**

FL	IF	VVS <sup>1-2</sup>	VS <sup>1-2</sup>	SI <sup>1-2</sup>	I <sup>1-3</sup>
Flawless	Internally Flawless	Very Very Slightly Included	Very Slightly Included	Slightly Included	Included

