



June 18, 2026

**IGI Report Number** LG794629178  
**HEXAGONAL STEP CUT**  
**LABORATORY GROWN DIAMOND**  
**5.18 X 4.41 X 3.32 MM**

**0.51 CARAT**  
**D**  
**VS 2**  
**EXCELLENT**  
**EXCELLENT**  
**NONE**  
**IGI LG794629178**

Comments: As Grown - No indication of post-growth treatment. This Laboratory Grown Diamond was created by High Pressure High Temperature (HPHT) growth process. Type II

**LABORATORY GROWN DIAMOND REPORT**

June 18, 2026  
IGI Report Number **LG794629178**  
Description **LABORATORY GROWN DIAMOND**  
Shape and Cutting Style **HEXAGONAL STEP CUT**  
Measurements **5.18 X 4.41 X 3.32 MM**

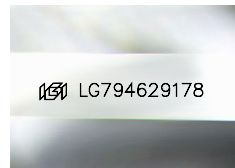
**GRADING RESULTS**

Carat Weight **0.51 CARAT**  
Color Grade **D**  
Clarity Grade **VS 2**

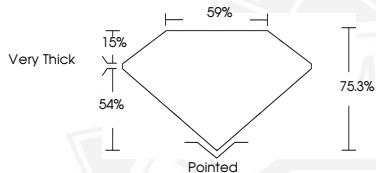
**ADDITIONAL GRADING INFORMATION**

Polish **EXCELLENT**  
Symmetry **EXCELLENT**  
Fluorescence **NONE**  
Inscription(s) **IGI LG794629178**

Comments: As Grown - No indication of post-growth treatment. This Laboratory Grown Diamond was created by High Pressure High Temperature (HPHT) growth process. Type II



Sample Image Used



June 18, 2026

**IGI Report Number** LG794629178  
**HEXAGONAL STEP CUT**  
**LABORATORY GROWN DIAMOND**  
**5.18 X 4.41 X 3.32 MM**

**0.51 CARAT**  
**D**  
**VS 2**  
**EXCELLENT**  
**EXCELLENT**  
**NONE**  
**IGI LG794629178**

Comments: As Grown - No indication of post-growth treatment. This Laboratory Grown Diamond was created by High Pressure High Temperature (HPHT) growth process. Type II



THIS DOCUMENT WAS PRODUCED WITH THE FOLLOWING SECURITY MEASURES: SPECIAL DOCUMENT PAPER, INK SCREENS, WATERMARK, BACKGROUND DESIGNS, HOLOGRAM AND OTHER SECURITY FEATURES NOT LISTED AND DO EXCEED DOCUMENT SECURITY INDUSTRY GUIDELINES.