



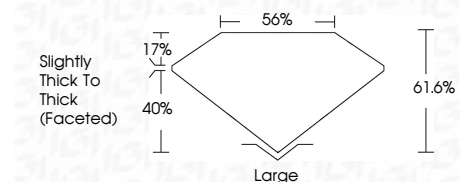
ELECTRONIC COPY

LG794629153
Report verification at igi.org



June 18, 2026
IGI Report Number **LG794629153**
Description **LABORATORY GROWN DIAMOND**
Shape and Cutting Style **ANTIQUÉ CUSHION CUT**
Measurements **6.41 X 5.84 X 3.60 MM**

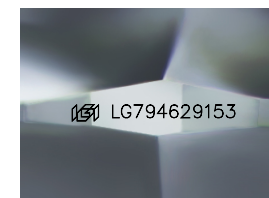
GRADING RESULTS
Carat Weight **1.05 CARAT**
Color Grade **D**
Clarity Grade **VS 2**



ADDITIONAL GRADING INFORMATION
Polish **EXCELLENT**
Symmetry **EXCELLENT**
Fluorescence **NONE**
Inscription(s) **(IGI) LG794629153**
Comments: As Grown - No indication of post-growth treatment.
This Laboratory Grown Diamond was created by High Pressure High Temperature (HPHT) growth process. Type II

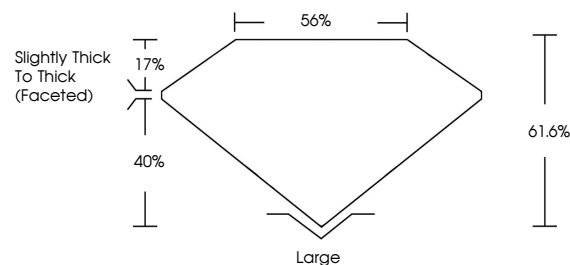


June 18, 2026
IGI Report No **LG794629153**
ANTIQUÉ CUSHION CUT
6.41 X 5.84 X 3.60 MM
Carat Weight **1.05 CARAT**
Color Grade **D**
Clarity Grade **VS 2**
Depth **40%**
Table **56%**
Girdle **Slightly Thick To Thick (Faceted)**
Culet **Large**
Polish **EXCELLENT**
Symmetry **EXCELLENT**
Fluorescence **NONE**
Inscription(s) **(IGI) LG794629153**
Comments: As Grown - No indication of post-growth treatment.
This Laboratory Grown Diamond was created by High Pressure High Temperature (HPHT) growth process. Type II

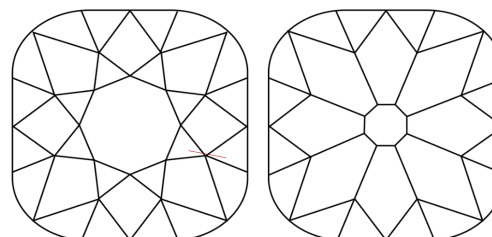


Sample Image Used

PROPORTIONS



CLARITY CHARACTERISTICS



KEY TO SYMBOLS

Red symbols indicate internal characteristics.
Green symbols indicate external characteristics.

COLOR

D E F G H I J Faint Very Light Light

CLARITY

FL	IF	VS ¹⁻²	VS ¹⁻²	SI ¹⁻²	I ¹⁻³
Flawless	Internally Flawless	Very Very Slightly Included	Very Slightly Included	Slightly Included	Included

