



**LABORATORY GROWN DIAMOND REPORT**

June 13, 2026  
 IGI Report Number **LG794629132**  
 Description **LABORATORY GROWN DIAMOND**  
 Shape and Cutting Style **OVAL POLYGON STEP CUT**  
 Measurements **7.30 X 4.89 X 2.90 MM**

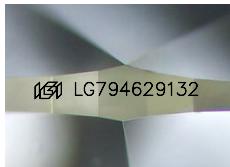
**GRADING RESULTS**

Carat Weight **0.76 CARAT**  
 Color Grade **E**  
 Clarity Grade **VVS 2**

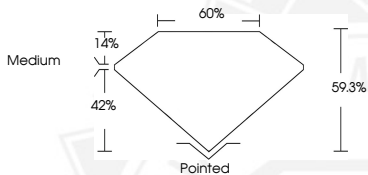
**ADDITIONAL GRADING INFORMATION**

Polish **EXCELLENT**  
 Symmetry **EXCELLENT**  
 Fluorescence **NONE**  
 Inscription(s) **IGI LG794629132**

Comments: As Grown - No indication of post-growth treatment. This Laboratory Grown Diamond was created by High Pressure High Temperature (HPHT) growth process. Type II



Sample Image Used



June 13, 2026

**IGI Report Number LG794629132**  
**OVAL POLYGON STEP CUT**  
**LABORATORY GROWN DIAMOND**  
**7.30 X 4.89 X 2.90 MM**  
 Carat Weight **0.76 CARAT**  
 Color Grade **E**  
 Clarity Grade **VVS 2**  
 Polish **EXCELLENT**  
 Symmetry **EXCELLENT**  
 Fluorescence **NONE**  
 Inscription(s) **IGI LG794629132**

Comments: As Grown - No indication of post-growth treatment. This Laboratory Grown Diamond was created by High Pressure High Temperature (HPHT) growth process. Type II



June 13, 2026

**IGI Report Number LG794629132**  
**OVAL POLYGON STEP CUT**  
**LABORATORY GROWN DIAMOND**  
**7.30 X 4.89 X 2.90 MM**  
 Carat Weight **0.76 CARAT**  
 Color Grade **E**  
 Clarity Grade **VVS 2**  
 Polish **EXCELLENT**  
 Symmetry **EXCELLENT**  
 Fluorescence **NONE**  
 Inscription(s) **IGI LG794629132**

Comments: As Grown - No indication of post-growth treatment. This Laboratory Grown Diamond was created by High Pressure High Temperature (HPHT) growth process. Type II



THIS DOCUMENT WAS PRODUCED WITH THE FOLLOWING SECURITY MEASURES: SPECIAL DOCUMENT PAPER, INK SCREENS, WATERMARK, BACKGROUND DESIGNS, HOLOGRAM AND OTHER SECURITY FEATURES NOT LISTED AND DO EXCEED DOCUMENT SECURITY INDUSTRY GUIDELINES.