



ELECTRONIC COPY

LG794627071
Report verification at igi.org



June 8, 2026
IGI Report Number LG794627071
Description LABORATORY GROWN DIAMOND
Shape and Cutting Style CUSHION MODIFIED BRILLIANT
Measurements 8.86 X 6.73 X 4.49 MM
GRADING RESULTS
Carat Weight 2.02 CARATS
Color Grade E
Clarity Grade VVS 2

LABORATORY GROWN DIAMOND REPORT

June 8, 2026
IGI Report Number LG794627071
Description LABORATORY GROWN DIAMOND
Shape and Cutting Style CUSHION MODIFIED BRILLIANT
Measurements 8.86 X 6.73 X 4.49 MM

GRADING RESULTS

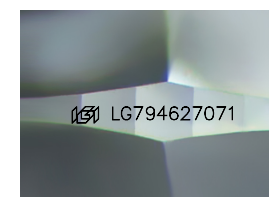
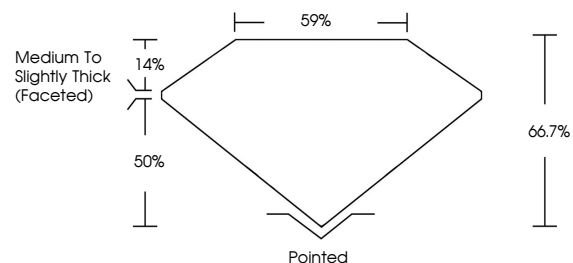
Carat Weight 2.02 CARATS
Color Grade E
Clarity Grade VVS 2

ADDITIONAL GRADING INFORMATION

Polish EXCELLENT
Symmetry EXCELLENT
Fluorescence NONE
Inscription(s) IGI LG794627071

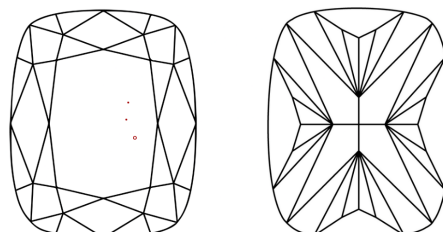
Comments: This Laboratory Grown Diamond was created by Chemical Vapor Deposition (CVD) growth process. Type IIa

PROPORTIONS



Sample Image Used

CLARITY CHARACTERISTICS



KEY TO SYMBOLS

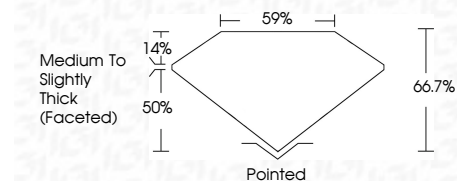
Red symbols indicate internal characteristics.
Green symbols indicate external characteristics.

COLOR

D E F G H I J Faint Very Light Light

CLARITY

FL IF VVS 1-2 VS 1-2 SI 1-2 I 1-3
Flawless Internally Flawless Very Very Slightly Included Very Slightly Included Slightly Included Included



ADDITIONAL GRADING INFORMATION

Polish EXCELLENT
Symmetry EXCELLENT
Fluorescence NONE
Inscription(s) IGI LG794627071
Comments: This Laboratory Grown Diamond was created by Chemical Vapor Deposition (CVD) growth process. Type IIa



June 8, 2026
IGI Report No LG794627071
CUSHION MODIFIED BRILLIANT
8.86 X 6.73 X 4.49 MM
2.02 CARATS E
Carat Weight 2.02 CARATS
Color Grade E
Clarity Grade VVS 2
Depth 66.7%
Table 59%
Girdle Medium to Slightly Thick (Faceted)
Culet Pointed
Polish EXCELLENT
Symmetry EXCELLENT
Fluorescence NONE
Inscription(s) IGI LG794627071
Comments: This Laboratory Grown Diamond was created by Chemical Vapor Deposition (CVD) growth process. Type IIa