



**ELECTRONIC COPY**

LG794627054  
Report verification at [igi.org](http://igi.org)



June 8, 2026  
IGI Report Number **LG794627054**  
Description **LABORATORY GROWN DIAMOND**  
Shape and Cutting Style **ROUND BRILLIANT**  
Measurements **8.78 - 8.82 X 5.34 MM**  
**GRADING RESULTS**  
Carat Weight **2.55 CARATS**  
Color Grade **F**  
Clarity Grade **VVS 2**  
Cut Grade **IDEAL**

June 8, 2026  
IGI Report Number **LG794627054**  
Description **LABORATORY GROWN DIAMOND**  
Shape and Cutting Style **ROUND BRILLIANT**  
Measurements **8.78 - 8.82 X 5.34 MM**

**GRADING RESULTS**

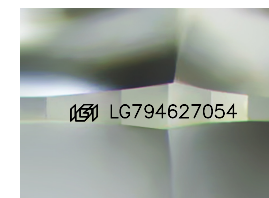
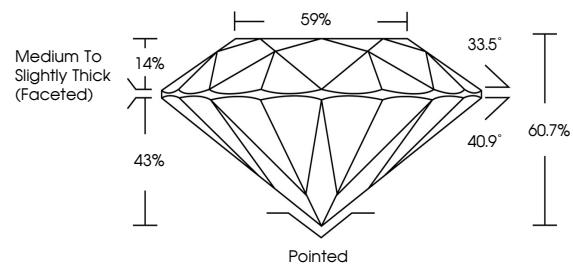
Carat Weight **2.55 CARATS**  
Color Grade **F**  
Clarity Grade **VVS 2**  
Cut Grade **IDEAL**

**ADDITIONAL GRADING INFORMATION**

Polish **EXCELLENT**  
Symmetry **EXCELLENT**  
Fluorescence **NONE**  
Inscription(s) **IGI LG794627054**

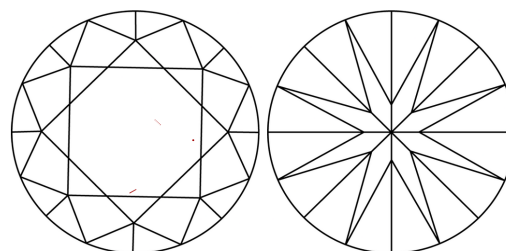
Comments: This Laboratory Grown Diamond was created by Chemical Vapor Deposition (CVD) growth process.  
Type IIa

**PROPORTIONS**



Sample Image Used

**CLARITY CHARACTERISTICS**



**KEY TO SYMBOLS**

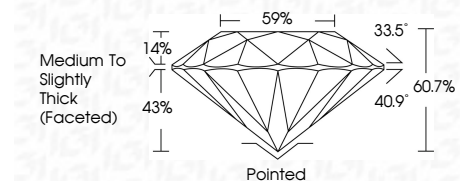
Red symbols indicate internal characteristics.  
Green symbols indicate external characteristics.

**COLOR**

D E F G H I J Faint Very Light Light

**CLARITY**

FL	IF	VVS <sup>1-2</sup>	VS <sup>1-2</sup>	SI <sup>1-2</sup>	I <sup>1-3</sup>
Flawless	Internally Flawless	Very Very Slightly Included	Very Slightly Included	Slightly Included	Included



**ADDITIONAL GRADING INFORMATION**

Polish **EXCELLENT**  
Symmetry **EXCELLENT**  
Fluorescence **NONE**  
Inscription(s) **IGI LG794627054**  
Comments: This Laboratory Grown Diamond was created by Chemical Vapor Deposition (CVD) growth process.  
Type IIa



June 8, 2026  
IGI Report No LG794627054  
**ROUND BRILLIANT**  
8.78 - 8.82 X 5.34 MM  
2.55 CARATS  
F  
VVS 2  
IDEAL  
60.7%  
59%  
Medium To Slightly Thick (Faceted)  
Pointed  
EXCELLENT  
EXCELLENT  
NONE  
IGI LG794627054  
Comments: This Laboratory Grown Diamond was created by Chemical Vapor Deposition (CVD) growth process.  
Type IIa