



ELECTRONIC COPY

LG794626295
Report verification at igi.org



June 30, 2026
IGI Report Number **LG794626295**
Description **LABORATORY GROWN DIAMOND**
Shape and Cutting Style **SQUARE CUSHION ANTIQUE CUT**
Measurements **8.55 X 8.52 X 5.36 MM**
GRADING RESULTS
Carat Weight **3.01 CARATS**
Color Grade **D**
Clarity Grade **VVS 1**

LABORATORY GROWN DIAMOND REPORT

June 30, 2026
IGI Report Number **LG794626295**
Description **LABORATORY GROWN DIAMOND**
Shape and Cutting Style **SQUARE CUSHION ANTIQUE CUT**
Measurements **8.55 X 8.52 X 5.36 MM**

GRADING RESULTS

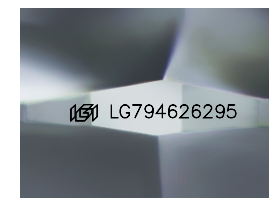
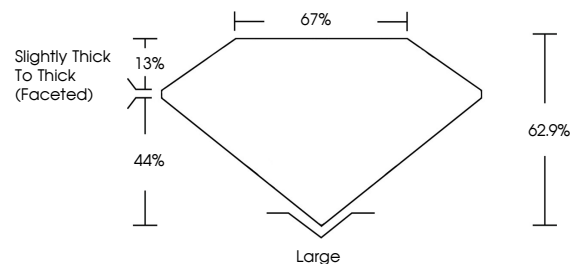
Carat Weight **3.01 CARATS**
Color Grade **D**
Clarity Grade **VVS 1**

ADDITIONAL GRADING INFORMATION

Polish **EXCELLENT**
Symmetry **EXCELLENT**
Fluorescence **NONE**
Inscription(s) **LG794626295**

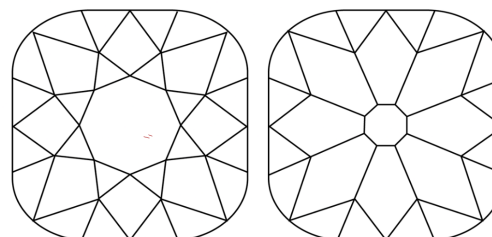
Comments: As Grown - No indication of post-growth treatment.
This Laboratory Grown Diamond was created by High Pressure High Temperature (HPHT) growth process. Type II

PROPORTIONS



Sample Image Used

CLARITY CHARACTERISTICS



KEY TO SYMBOLS

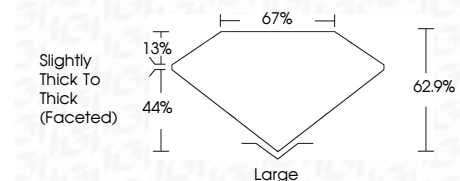
Red symbols indicate internal characteristics.
Green symbols indicate external characteristics.

COLOR

D E F G H I J Faint Very Light Light

CLARITY

FL	IF	VVS ¹⁻²	VS ¹⁻²	SI ¹⁻²	I ¹⁻³
Flawless	Internally Flawless	Very Very Slightly Included	Very Slightly Included	Slightly Included	Included



ADDITIONAL GRADING INFORMATION

Polish **EXCELLENT**
Symmetry **EXCELLENT**
Fluorescence **NONE**
Inscription(s) **LG794626295**
Comments: As Grown - No indication of post-growth treatment.
This Laboratory Grown Diamond was created by High Pressure High Temperature (HPHT) growth process. Type II



June 30, 2026
IGI Report No **LG794626295**
SQUARE CUSHION ANTIQUE CUT
8.55 X 8.52 X 5.36 MM
Carat Weight **3.01 CARATS**
Color Grade **D**
Clarity Grade **VVS 1**
Depth **62.9%**
Table **67%**
Girdle **Slightly Thick To Thick (Faceted)**
Culet **Large**
Polish **EXCELLENT**
Symmetry **EXCELLENT**
Fluorescence **NONE**
Inscription(s) **LG794626295**
Comments: As Grown - No indication of post-growth treatment.
This Laboratory Grown Diamond was created by High Pressure High Temperature (HPHT) growth process. Type II