



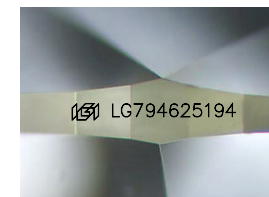
ELECTRONIC COPY

LG794625194
Report verification at igi.org



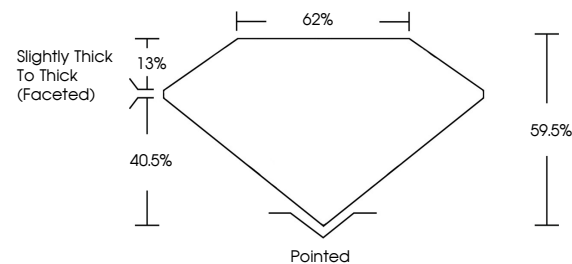
May 29, 2026
IGI Report Number **LG794625194**
Description **LABORATORY GROWN DIAMOND**
Shape and Cutting Style **OVAL BRILLIANT**
Measurements **8.62 X 6.17 X 3.67 MM**

GRADING RESULTS
Carat Weight **1.27 CARAT**
Color Grade **E**
Clarity Grade **VVS 1**

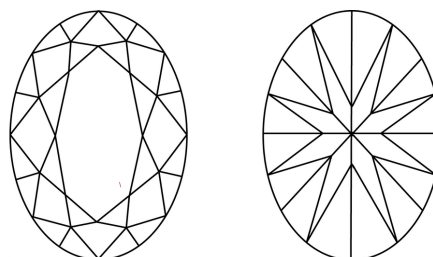


Sample Image Used

PROPORTIONS



CLARITY CHARACTERISTICS



KEY TO SYMBOLS

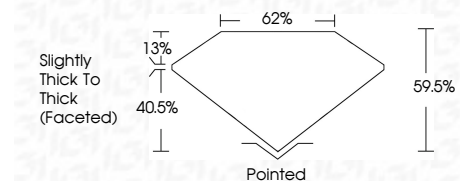
Red symbols indicate internal characteristics.
Green symbols indicate external characteristics.

COLOR

D E F G H I J Faint Very Light Light

CLARITY

FL	IF	VVS ¹⁻²	VS ¹⁻²	SI ¹⁻²	I ¹⁻³
Flawless	Internally Flawless	Very Very Slightly Included	Very Slightly Included	Slightly Included	Included



ADDITIONAL GRADING INFORMATION

Polish **EXCELLENT**
Symmetry **EXCELLENT**
Fluorescence **NONE**
Inscription(s) **IGI LG794625194**
Comments: As Grown - No indication of post-growth treatment.
This Laboratory Grown Diamond was created by High Pressure High Temperature (HPHT) growth process.
Type II



IGI



May 29, 2026
IGI Report No LG794625194
OVAL BRILLIANT
8.62 X 6.17 X 3.67 MM
Carat Weight 1.27 CARAT
Color Grade E
Clarity Grade VVS 1
Depth 60.6%
Table 62%
Girdle Slightly Thick To Thick (Faceted)
Culet Pointed
Polish EXCELLENT
Symmetry EXCELLENT
Fluorescence NONE
Inscription(s) IGI LG794625194
Comments: As Grown - No indication of post-growth treatment.
This Laboratory Grown Diamond was created by High Pressure High Temperature (HPHT) growth process.
Type II