



**ELECTRONIC COPY**

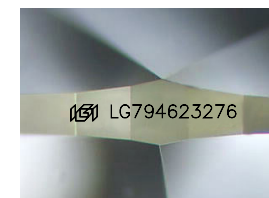
LG794623276  
Report verification at igi.org



May 11, 2026  
IGI Report Number **LG794623276**  
Description **LABORATORY GROWN DIAMOND**

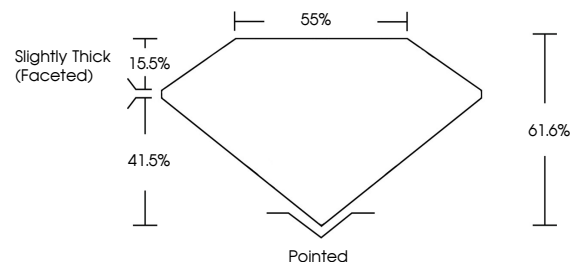
Shape and Cutting Style **PEAR BRILLIANT**  
Measurements **10.17 X 6.19 X 3.81 MM**

**GRADING RESULTS**  
Carat Weight **1.40 CARAT**  
Color Grade **D**  
Clarity Grade **FLAWLESS**

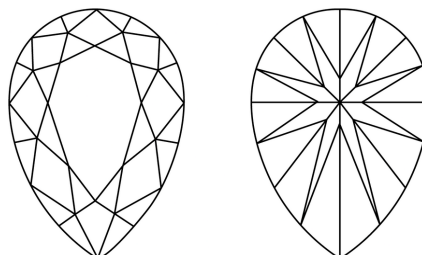


Sample Image Used

**PROPORTIONS**



**CLARITY CHARACTERISTICS**



**KEY TO SYMBOLS**

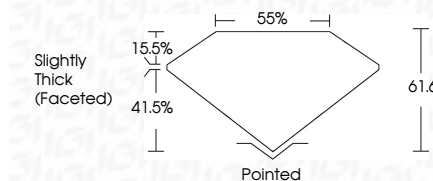
Red symbols indicate internal characteristics.  
Green symbols indicate external characteristics.

**COLOR**

D E F G H I J Faint Very Light Light

**CLARITY**

FL	IF	VS <sup>1-2</sup>	VS <sup>1-2</sup>	SI <sup>1-2</sup>	I <sup>1-3</sup>
Flawless	Internally Flawless	Very Very Slightly Included	Very Slightly Included	Slightly Included	Included



**ADDITIONAL GRADING INFORMATION**

Polish **EXCELLENT**  
Symmetry **EXCELLENT**  
Fluorescence **NONE**  
Inscription(s) **IGI LG794623276**  
Comments: As Grown - No indication of post-growth treatment.  
This Laboratory Grown Diamond was created by High Pressure High Temperature (HPHT) growth process.  
Type II



May 11, 2026  
IGI Report No LG794623276  
PEAR BRILLIANT  
1.40 CARAT  
Color Grade D  
Clarity Grade FLAWLESS  
Depth 61.6%  
Table 55%  
Girdle Slightly Thick (Faceted)  
Culet Pointed  
Polish EXCELLENT  
Symmetry EXCELLENT  
Fluorescence NONE  
Inscription(s) IGI LG794623276  
Comments: As Grown - No indication of post-growth treatment.  
This Laboratory Grown Diamond was created by High Pressure High Temperature (HPHT) growth process.  
Type II