



**ELECTRONIC COPY**

LG794623219  
Report verification at igi.org



May 11, 2026  
IGI Report Number **LG794623219**  
Description **LABORATORY GROWN DIAMOND**  
Shape and Cutting Style **ROUND BRILLIANT**  
Measurements **6.37 - 6.41 X 3.96 MM**

**GRADING RESULTS**

Carat Weight **1.00 CARAT**  
Color Grade **D**  
Clarity Grade **VVS 1**  
Cut Grade **EXCELLENT**

May 11, 2026  
IGI Report Number **LG794623219**  
Description **LABORATORY GROWN DIAMOND**  
Shape and Cutting Style **ROUND BRILLIANT**  
Measurements **6.37 - 6.41 X 3.96 MM**

**GRADING RESULTS**

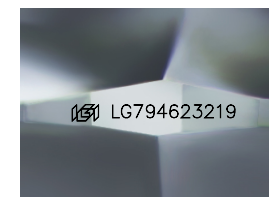
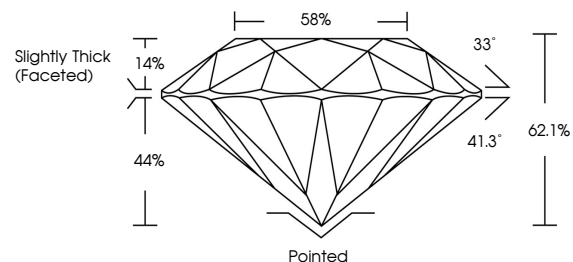
Carat Weight **1.00 CARAT**  
Color Grade **D**  
Clarity Grade **VVS 1**  
Cut Grade **EXCELLENT**

**ADDITIONAL GRADING INFORMATION**

Polish **EXCELLENT**  
Symmetry **EXCELLENT**  
Fluorescence **NONE**  
Inscription(s) **IGI LG794623219**

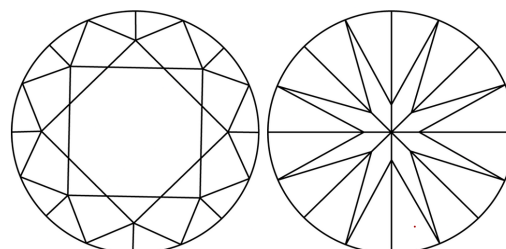
Comments: This Laboratory Grown Diamond was created by Chemical Vapor Deposition (CVD) growth process.  
Type IIa

**PROPORTIONS**



Sample Image Used

**CLARITY CHARACTERISTICS**



**KEY TO SYMBOLS**

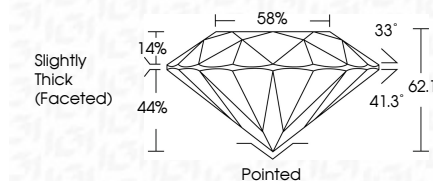
Red symbols indicate internal characteristics.  
Green symbols indicate external characteristics.

**COLOR**

D E F G H I J Faint Very Light Light

**CLARITY**

FL	IF	VVS <sup>1-2</sup>	VS <sup>1-2</sup>	SI <sup>1-2</sup>	I <sup>1-3</sup>
Flawless	Internally Flawless	Very Very Slightly Included	Very Slightly Included	Slightly Included	Included



**ADDITIONAL GRADING INFORMATION**

Polish **EXCELLENT**  
Symmetry **EXCELLENT**  
Fluorescence **NONE**  
Inscription(s) **IGI LG794623219**  
Comments: This Laboratory Grown Diamond was created by Chemical Vapor Deposition (CVD) growth process.  
Type IIa



**IGI**



May 11, 2026	IGI Report No LG794623219	1.00 CARAT	D	VVS 1	62.1%	58%	Slightly Thick (Faceted)	Pointed	EXCELLENT	EXCELLENT	NONE	IGI LG794623219
ROUND BRILLIANT	6.37 - 6.41 X 3.96 MM	Color Grade	Clarity Grade	Cut Grade	Depth	Table	Girdle	Culet	Polish	Symmetry	Fluorescence	Inscription(s)

Comments: This Laboratory Grown Diamond was created by Chemical Vapor Deposition (CVD) growth process.  
Type IIa