



ELECTRONIC COPY

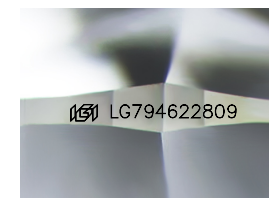
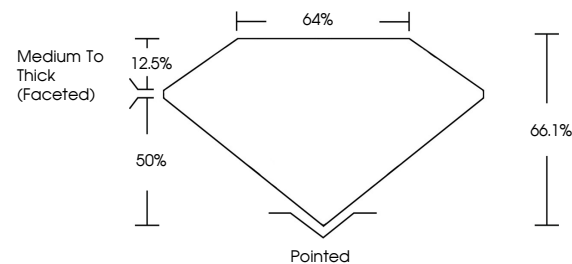
LG794622809
Report verification at igi.org



May 19, 2026
IGI Report Number **LG794622809**
Description **LABORATORY GROWN DIAMOND**
Shape and Cutting Style **SQUARE CUSHION MODIFIED BRILLIANT**
Measurements **6.60 X 6.51 X 4.30 MM**
GRADING RESULTS
Carat Weight **1.56 CARAT**
Color Grade **D**
Clarity Grade **VVS 1**

May 19, 2026
IGI Report Number **LG794622809**
Description **LABORATORY GROWN DIAMOND**
Shape and Cutting Style **SQUARE CUSHION MODIFIED BRILLIANT**
Measurements **6.60 X 6.51 X 4.30 MM**

PROPORTIONS

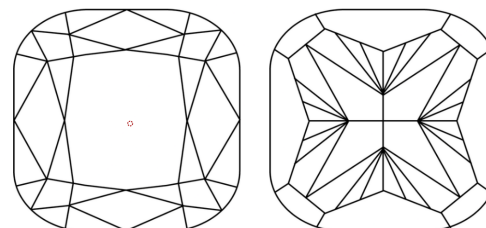


Sample Image Used

GRADING RESULTS

Carat Weight **1.56 CARAT**
Color Grade **D**
Clarity Grade **VVS 1**

CLARITY CHARACTERISTICS



KEY TO SYMBOLS

Red symbols indicate internal characteristics.
Green symbols indicate external characteristics.

ADDITIONAL GRADING INFORMATION

Polish **EXCELLENT**
Symmetry **EXCELLENT**
Fluorescence **NONE**
Inscription(s) **IGI LG794622809**

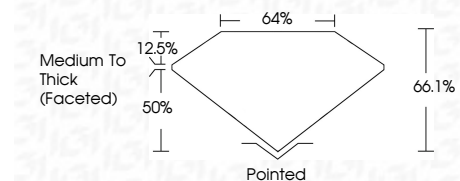
Comments: As Grown - No indication of post-growth treatment.
This Laboratory Grown Diamond was created by High Pressure High Temperature (HPHT) growth process.
Type II

COLOR

D E F G H I J Faint Very Light Light

CLARITY

FL	IF	VVS ¹⁻²	VS ¹⁻²	SI ¹⁻²	I ¹⁻³
Flawless	Internally Flawless	Very Very Slightly Included	Very Slightly Included	Slightly Included	Included



ADDITIONAL GRADING INFORMATION

Polish **EXCELLENT**
Symmetry **EXCELLENT**
Fluorescence **NONE**
Inscription(s) **IGI LG794622809**
Comments: As Grown - No indication of post-growth treatment.
This Laboratory Grown Diamond was created by High Pressure High Temperature (HPHT) growth process.
Type II



May 19, 2026
IGI Report No LG794622809
SQUARE CUSHION MODIFIED BRILLIANT
6.60 X 6.51 X 4.30 MM
1.56 CARAT
D
VVS 1
66.1%
48%
Medium To Thick (Faceted)
Pointed
EXCELLENT
EXCELLENT
NONE
IGI LG794622809
Comments: As Grown - No indication of post-growth treatment.
This Laboratory Grown Diamond was created by High Pressure High Temperature (HPHT) growth process.
Type II