



ELECTRONIC COPY

LG794622445
Report verification at igi.org



May 18, 2026
IGI Report Number **LG794622445**
Description **LABORATORY GROWN DIAMOND**
Shape and Cutting Style **SQUARE CUSHION MODIFIED BRILLIANT**
Measurements **7.04 X 7.02 X 4.74 MM**
GRADING RESULTS
Carat Weight **2.02 CARATS**
Color Grade **FANCY INTENSE BLUE**
Clarity Grade **VVS 1**

LABORATORY GROWN DIAMOND REPORT

May 18, 2026
IGI Report Number **LG794622445**
Description **LABORATORY GROWN DIAMOND**
Shape and Cutting Style **SQUARE CUSHION MODIFIED BRILLIANT**
Measurements **7.04 X 7.02 X 4.74 MM**

GRADING RESULTS

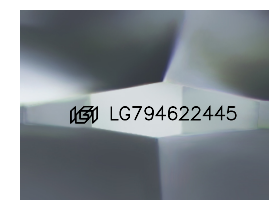
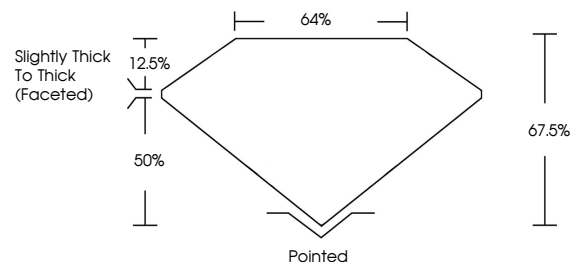
Carat Weight **2.02 CARATS**
Color Grade **FANCY INTENSE BLUE**
Clarity Grade **VVS 1**

ADDITIONAL GRADING INFORMATION

Polish **EXCELLENT**
Symmetry **EXCELLENT**
Fluorescence **NONE**
Inscription(s) **IGI LG794622445**

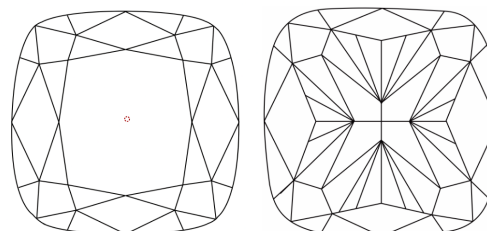
Comments: This Laboratory Grown Diamond was created by High Pressure High Temperature (HPHT) growth process.
Indications of post-growth treatment.

PROPORTIONS



Sample Image Used

CLARITY CHARACTERISTICS



KEY TO SYMBOLS

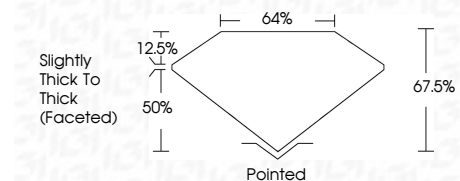
Red symbols indicate internal characteristics.
Green symbols indicate external characteristics.

COLOR

D E F G H I J Faint Very Light Light

CLARITY

FL	IF	VVS ¹⁻²	VS ¹⁻²	SI ¹⁻²	I ¹⁻³
Flawless	Internally Flawless	Very Very Slightly Included	Very Slightly Included	Slightly Included	Included



ADDITIONAL GRADING INFORMATION

Polish **EXCELLENT**
Symmetry **EXCELLENT**
Fluorescence **NONE**
Inscription(s) **IGI LG794622445**
Comments: This Laboratory Grown Diamond was created by High Pressure High Temperature (HPHT) growth process.
Indications of post-growth treatment.



May 18, 2026
IGI Report No LG794622445
SQUARE CUSHION MODIFIED BRILLIANT
2.02 CARATS
FANCY INTENSE BLUE
VVS 1
67.5%
64%
Slightly Thick To Thick (Faceted)
Pointed
EXCELLENT
EXCELLENT
NONE
IGI LG794622445
Comments: This Laboratory Grown Diamond was created by High Pressure High Temperature (HPHT) growth process.
Indications of post-growth treatment.