



**ELECTRONIC COPY**

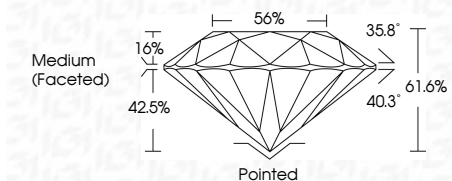
LG794622327  
Report verification at igi.org



May 14, 2026  
IGI Report Number **LG794622327**  
Description **LABORATORY GROWN DIAMOND**  
Shape and Cutting Style **ROUND BRILLIANT**  
Measurements **7.20 - 7.26 X 4.45 MM**

**GRADING RESULTS**

Carat Weight **1.43 CARAT**  
Color Grade **D**  
Clarity Grade **FLAWLESS**  
Cut Grade **IDEAL**



**ADDITIONAL GRADING INFORMATION**

Polish **EXCELLENT**  
Symmetry **EXCELLENT**  
Fluorescence **NONE**  
Inscription(s) **IGI LG794622327**  
Comments: As Grown - No indication of post-growth treatment.  
This Laboratory Grown Diamond was created by High Pressure High Temperature (HPHT) growth process.  
Type II



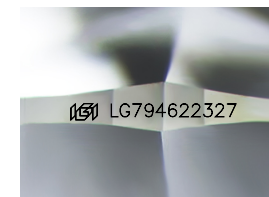
**IGI**

May 14, 2026  
IGI Report No LG794622327  
**ROUND BRILLIANT**  
7.20 - 7.26 X 4.45 MM  
1.43 CARAT  
D  
FLAWLESS  
IDEAL  
61.6%  
56%  
Medium (Faceted)

Culet  
Polish  
Symmetry  
Fluorescence  
Inscription(s)

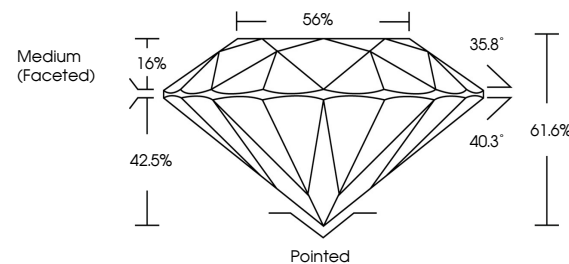
Pointed  
EXCELLENT  
EXCELLENT  
NONE  
IGI LG794622327

Comments:  
As Grown - No indication of post-growth treatment.  
This Laboratory Grown Diamond was created by High Pressure High Temperature (HPHT) growth process.  
Type II

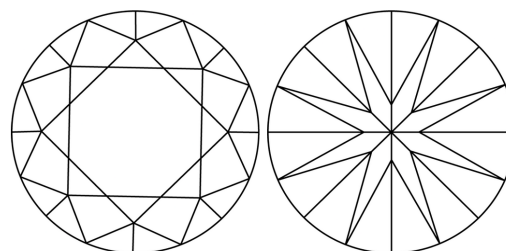


Sample Image Used

**PROPORTIONS**



**CLARITY CHARACTERISTICS**



**KEY TO SYMBOLS**

Red symbols indicate internal characteristics.  
Green symbols indicate external characteristics.

**COLOR**

D E F G H I J Faint Very Light Light

**CLARITY**

FL	IF	VS <sup>1-2</sup>	VS <sup>1-2</sup>	SI <sup>1-2</sup>	I <sup>1-3</sup>
Flawless	Internally Flawless	Very Very Slightly Included	Very Slightly Included	Slightly Included	Included

