



**ELECTRONIC COPY**

LG794621126  
Report verification at igi.org



May 8, 2026

IGI Report Number **LG794621126**

Description **LABORATORY GROWN DIAMOND**

Shape and Cutting Style **ROUND BRILLIANT**

Measurements **10.29 - 10.33 X 6.06 MM**

**GRADING RESULTS**

Carat Weight **3.90 CARATS**

Color Grade **FANCY INTENSE PINK**

Clarity Grade **VVS 2**

Cut Grade **IDEAL**

May 8, 2026

IGI Report Number **LG794621126**

Description **LABORATORY GROWN DIAMOND**

Shape and Cutting Style **ROUND BRILLIANT**

Measurements **10.29 - 10.33 X 6.06 MM**

**GRADING RESULTS**

Carat Weight **3.90 CARATS**

Color Grade **FANCY INTENSE PINK**

Clarity Grade **VVS 2**

Cut Grade **IDEAL**

**ADDITIONAL GRADING INFORMATION**

Polish **EXCELLENT**

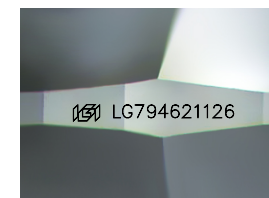
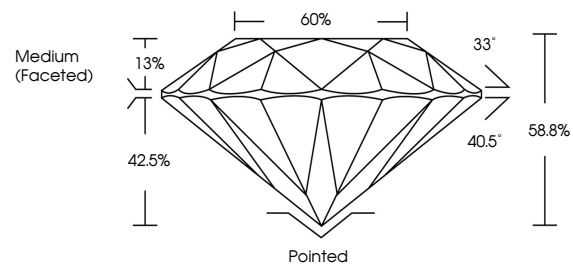
Symmetry **EXCELLENT**

Fluorescence **SLIGHT**

Inscription(s) **LG794621126**

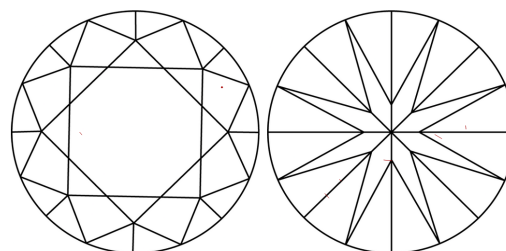
Comments: This Laboratory Grown Diamond was created by Chemical Vapor Deposition (CVD) growth process.  
Indications of post-growth treatment.

**PROPORTIONS**



Sample Image Used

**CLARITY CHARACTERISTICS**



**KEY TO SYMBOLS**

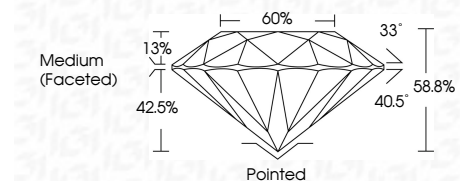
Red symbols indicate internal characteristics.  
Green symbols indicate external characteristics.

**COLOR**

D E F G H I J Faint Very Light Light

**CLARITY**

FL	IF	VVS <sup>1-2</sup>	VS <sup>1-2</sup>	SI <sup>1-2</sup>	I <sup>1-3</sup>
Flawless	Internally Flawless	Very Very Slightly Included	Very Slightly Included	Slightly Included	Included



**ADDITIONAL GRADING INFORMATION**

Polish **EXCELLENT**

Symmetry **EXCELLENT**

Fluorescence **SLIGHT**

Inscription(s) **LG794621126**

Comments: This Laboratory Grown Diamond was created by Chemical Vapor Deposition (CVD) growth process.  
Indications of post-growth treatment.



May 8, 2026  
IGI Report No LG794621126  
ROUND BRILLIANT

3.90 CARATS  
FANCY INTENSE PINK

VVS 2  
IDEAL

60%  
Medium (Faceted)

Pointed  
EXCELLENT  
EXCELLENT  
SLIGHT  
SLIGHT

IGI LG794621126

Comments: This Laboratory Grown Diamond was created by Chemical Vapor Deposition (CVD) growth process.  
Indications of post-growth treatment.