



ELECTRONIC COPY

LG794616650
Report verification at igi.org



May 19, 2026
IGI Report Number **LG794616650**
Description **LABORATORY GROWN DIAMOND**
Shape and Cutting Style **CUSHION MODIFIED BRILLIANT**
Measurements **9.51 X 8.27 X 5.73 MM**
GRADING RESULTS
Carat Weight **4.12 CARATS**
Color Grade **FANCY LIGHT BROWN**
Clarity Grade **VVS 2**

LABORATORY GROWN DIAMOND REPORT

May 19, 2026
IGI Report Number **LG794616650**
Description **LABORATORY GROWN DIAMOND**
Shape and Cutting Style **CUSHION MODIFIED BRILLIANT**
Measurements **9.51 X 8.27 X 5.73 MM**

GRADING RESULTS

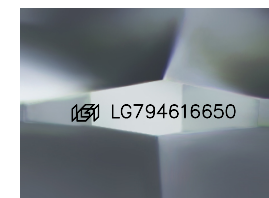
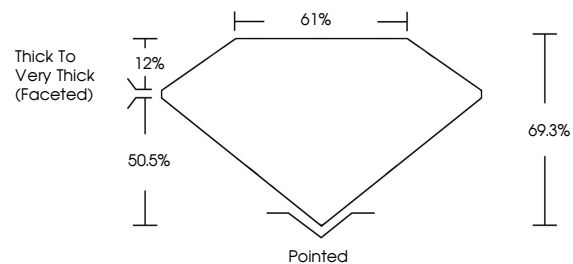
Carat Weight **4.12 CARATS**
Color Grade **FANCY LIGHT BROWN**
Clarity Grade **VVS 2**

ADDITIONAL GRADING INFORMATION

Polish **EXCELLENT**
Symmetry **EXCELLENT**
Fluorescence **VERY SLIGHT**
Inscription(s) **IGI LG794616650**

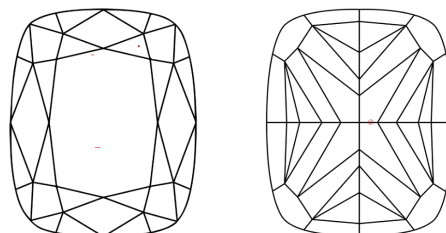
Comments: This Laboratory Grown Diamond was created by Chemical Vapor Deposition (CVD) growth process.

PROPORTIONS



Sample Image Used

CLARITY CHARACTERISTICS



KEY TO SYMBOLS

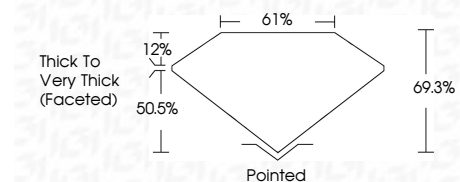
Red symbols indicate internal characteristics.
Green symbols indicate external characteristics.

COLOR

D E F G H I J Faint Very Light Light

CLARITY

FL	IF	VVS ¹⁻²	VS ¹⁻²	SI ¹⁻²	I ¹⁻³
Flawless	Internally Flawless	Very Very Slightly Included	Very Slightly Included	Slightly Included	Included



ADDITIONAL GRADING INFORMATION

Polish **EXCELLENT**
Symmetry **EXCELLENT**
Fluorescence **VERY SLIGHT**
Inscription(s) **IGI LG794616650**
Comments: This Laboratory Grown Diamond was created by Chemical Vapor Deposition (CVD) growth process.



May 19, 2026
IGI Report No LG794616650
CUSHION MODIFIED BRILLIANT
9.51 X 8.27 X 5.73 MM
4.12 CARATS
FANCY LIGHT BROWN
VVS 2
69.3%
61%
Thick to Very Thick (Faceted)
Pointed
EXCELLENT
EXCELLENT
VERY SLIGHT
IGI LG794616650
Comments: This Laboratory Grown Diamond was created by Chemical Vapor Deposition (CVD) growth process.