



ELECTRONIC COPY

LG794616254 Report verification at igi.org



May 15, 2026 IGI Report Number LG794616254 Description LABORATORY GROWN DIAMOND Shape and Cutting Style SQUARE CUSHION MODIFIED BRILLIANT Measurements 6.64 X 6.53 X 4.17 MM GRADING RESULTS Carat Weight 1.51 CARAT Color Grade D Clarity Grade VVS 2

LABORATORY GROWN DIAMOND REPORT

May 15, 2026 IGI Report Number LG794616254 Description LABORATORY GROWN DIAMOND Shape and Cutting Style SQUARE CUSHION MODIFIED BRILLIANT Measurements 6.64 X 6.53 X 4.17 MM

GRADING RESULTS

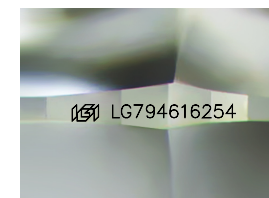
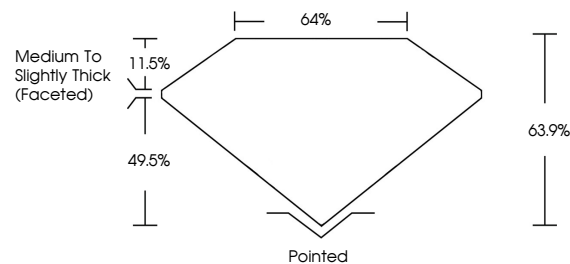
Carat Weight 1.51 CARAT Color Grade D Clarity Grade VVS 2

ADDITIONAL GRADING INFORMATION

Polish EXCELLENT Symmetry EXCELLENT Fluorescence NONE Inscription(s) LG794616254

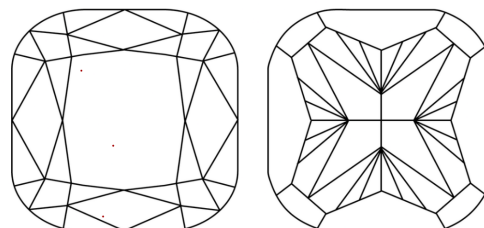
Comments: This Laboratory Grown Diamond was created by Chemical Vapor Deposition (CVD) growth process. Type IIa

PROPORTIONS



Sample Image Used

CLARITY CHARACTERISTICS



KEY TO SYMBOLS

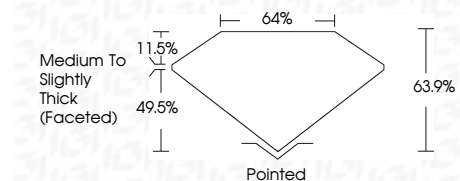
Red symbols indicate internal characteristics. Green symbols indicate external characteristics.

COLOR

D E F G H I J Faint Very Light Light

CLARITY

FL IF VVS 1-2 VS 1-2 SI 1-2 I 1-3 Flawless Internally Flawless Very Very Slightly Included Very Slightly Included Slightly Included Included



ADDITIONAL GRADING INFORMATION

Polish EXCELLENT Symmetry EXCELLENT Fluorescence NONE Inscription(s) LG794616254 Comments: This Laboratory Grown Diamond was created by Chemical Vapor Deposition (CVD) growth process. Type IIa



May 15, 2026 IGI Report No LG794616254 SQUARE CUSHION MODIFIED BRILLIANT 1.51 CARAT D VVS 2 6.64 X 6.53 X 4.17 MM D 63.9% 49.5% Medium to Slightly Thick (Faceted) Pointed EXCELLENT EXCELLENT NONE LG794616254 Comments: This Laboratory Grown Diamond was created by Chemical Vapor Deposition (CVD) growth process. Type IIa