



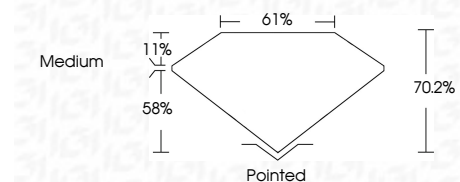
ELECTRONIC COPY

LG794615303
Report verification at igi.org



May 12, 2026
IGI Report Number **LG794615303**
Description **LABORATORY GROWN DIAMOND**
Shape and Cutting Style **PRINCESS CUT**
Measurements **6.49 X 6.38 X 4.48 MM**

GRADING RESULTS
Carat Weight **1.57 CARAT**
Color Grade **FANCY VIVID PINK**
Clarity Grade **VS 1**



ADDITIONAL GRADING INFORMATION
Polish **EXCELLENT**
Symmetry **VERY GOOD**
Fluorescence **STRONG**
Inscription(s) **IGI LG794615303**
Comments: This Laboratory Grown Diamond was created by Chemical Vapor Deposition (CVD) growth process. Indications of post-growth treatment.



May 12, 2026
IGI Report No LG794615303
PRINCESS CUT
1.57 CARAT
FANCY VIVID PINK
VS 1
6.49 X 6.38 X 4.48 MM
Color Grade
Fancy Vivid Pink
Depth 58%
Table 11%
Girdle Medium
Pointed
EXCELLENT
VERY GOOD
STRONG
IGI LG794615303
Comments: This Laboratory Grown Diamond was created by Chemical Vapor Deposition (CVD) growth process. Indications of post-growth treatment.

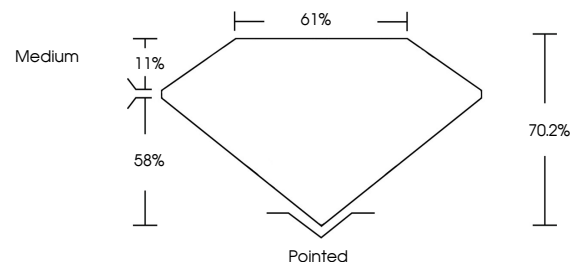
May 12, 2026
IGI Report Number **LG794615303**
Description **LABORATORY GROWN DIAMOND**
Shape and Cutting Style **PRINCESS CUT**
Measurements **6.49 X 6.38 X 4.48 MM**

GRADING RESULTS
Carat Weight **1.57 CARAT**
Color Grade **FANCY VIVID PINK**
Clarity Grade **VS 1**

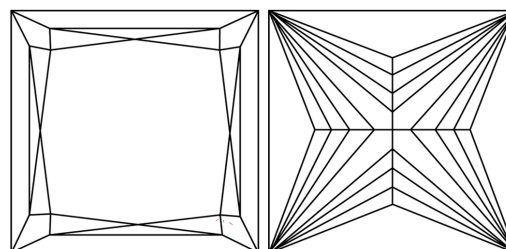
ADDITIONAL GRADING INFORMATION
Polish **EXCELLENT**
Symmetry **VERY GOOD**
Fluorescence **STRONG**
Inscription(s) **IGI LG794615303**

Comments: This Laboratory Grown Diamond was created by Chemical Vapor Deposition (CVD) growth process. Indications of post-growth treatment.

PROPORTIONS

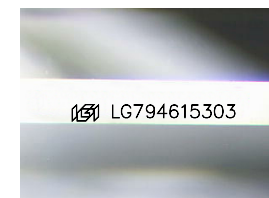


CLARITY CHARACTERISTICS



KEY TO SYMBOLS

Red symbols indicate internal characteristics.
Green symbols indicate external characteristics.



Sample Image Used

COLOR

D E F G H I J Faint Very Light Light

CLARITY

FL	IF	VS ¹⁻²	VS ¹⁻²	SI ¹⁻²	I ¹⁻³
Flawless	Internally Flawless	Very Very Slightly Included	Very Slightly Included	Slightly Included	Included

