



ELECTRONIC COPY

LG794615295
Report verification at igi.org



May 12, 2026

IGI Report Number **LG794615295**

Description **LABORATORY GROWN DIAMOND**

Shape and Cutting Style **PRINCESS CUT**

Measurements **6.54 X 6.43 X 4.66 MM**

GRADING RESULTS

Carat Weight **1.73 CARAT**

Color Grade **FANCY VIVID GREEN**

Clarity Grade **VS 1**

May 12, 2026
IGI Report Number **LG794615295**
Description **LABORATORY GROWN DIAMOND**
Shape and Cutting Style **PRINCESS CUT**
Measurements **6.54 X 6.43 X 4.66 MM**

GRADING RESULTS

Carat Weight **1.73 CARAT**

Color Grade **FANCY VIVID GREEN**

Clarity Grade **VS 1**

ADDITIONAL GRADING INFORMATION

Polish **EXCELLENT**

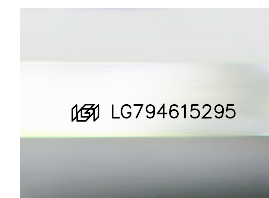
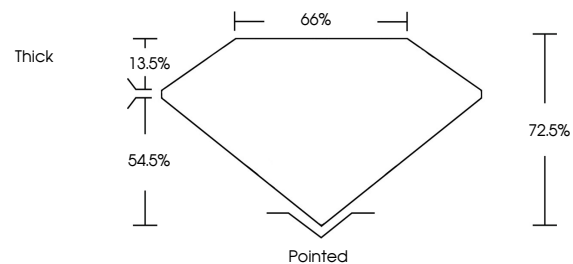
Symmetry **EXCELLENT**

Fluorescence **VERY SLIGHT**

Inscription(s) **IGI LG794615295**

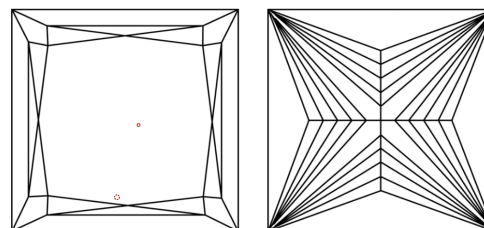
Comments: This Laboratory Grown Diamond was created by Chemical Vapor Deposition (CVD) growth process.
Indications of post-growth treatment.

PROPORTIONS



Sample Image Used

CLARITY CHARACTERISTICS



KEY TO SYMBOLS

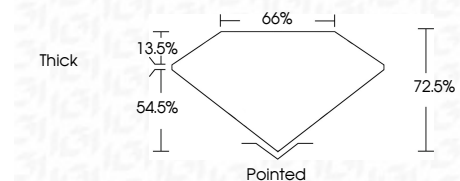
Red symbols indicate internal characteristics.
Green symbols indicate external characteristics.

COLOR

D E F G H I J Faint Very Light Light

CLARITY

FL	IF	VS ¹⁻²	VS ¹⁻²	SI ¹⁻²	I ¹⁻³
Flawless	Internally Flawless	Very Very Slightly Included	Very Slightly Included	Slightly Included	Included



ADDITIONAL GRADING INFORMATION

Polish **EXCELLENT**

Symmetry **EXCELLENT**

Fluorescence **VERY SLIGHT**

Inscription(s) **IGI LG794615295**

Comments: This Laboratory Grown Diamond was created by Chemical Vapor Deposition (CVD) growth process.
Indications of post-growth treatment.



May 12, 2026
IGI Report No LG794615295
PRINCESS CUT
6.54 X 6.43 X 4.66 MM
1.73 CARAT
FANCY VIVID GREEN
VS 1
72.5%
66%
Thick
Pointed
EXCELLENT
EXCELLENT
VERY SLIGHT
IGI LG794615295
Comments: This Laboratory Grown Diamond was created by Chemical Vapor Deposition (CVD) growth process.
Indications of post-growth treatment.