



ELECTRONIC COPY

LABORATORY GROWN DIAMOND REPORT

May 11, 2026
IGI Report Number LG794615199
Description LABORATORY GROWN DIAMOND
Shape and Cutting Style HEXAGONAL MODIFIED BRILLIANT
Measurements 13.68 X 5.86 X 3.83 MM

GRADING RESULTS

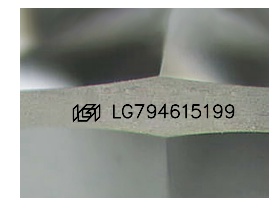
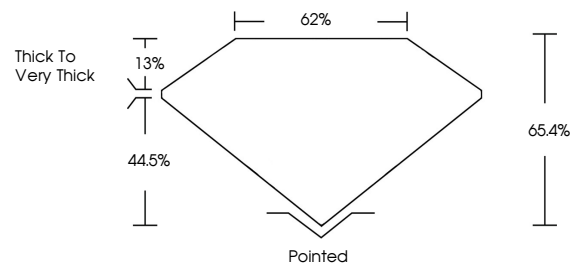
Carat Weight 1.91 CARAT
Color Grade D
Clarity Grade VVS 2

ADDITIONAL GRADING INFORMATION

Polish EXCELLENT
Symmetry EXCELLENT
Fluorescence NONE
Inscription(s) IGI LG794615199

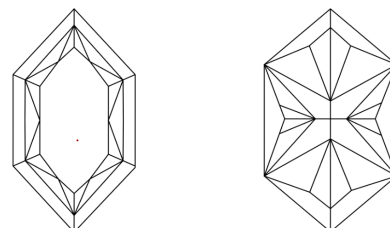
Comments: This Laboratory Grown Diamond was created by Chemical Vapor Deposition (CVD) growth process.
Type IIa

PROPORTIONS



Sample Image Used

CLARITY CHARACTERISTICS



KEY TO SYMBOLS

Red symbols indicate internal characteristics.
Green symbols indicate external characteristics.

COLOR

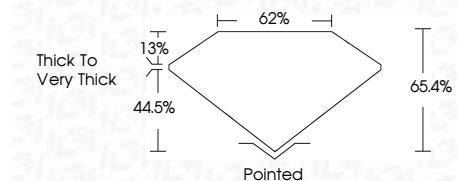
D E F G H I J Faint Very Light Light

CLARITY

FL IF VVS¹⁻² VS¹⁻² SI¹⁻² I¹⁻³
Flawless Internally Flawless Very Very Slightly Included Very Slightly Included Slightly Included Included



May 11, 2026
IGI Report Number LG794615199
Description LABORATORY GROWN DIAMOND
Shape and Cutting Style HEXAGONAL MODIFIED BRILLIANT
Measurements 13.68 X 5.86 X 3.83 MM
GRADING RESULTS
Carat Weight 1.91 CARAT
Color Grade D
Clarity Grade VVS 2



ADDITIONAL GRADING INFORMATION

Polish EXCELLENT
Symmetry EXCELLENT
Fluorescence NONE
Inscription(s) IGI LG794615199
Comments: This Laboratory Grown Diamond was created by Chemical Vapor Deposition (CVD) growth process.
Type IIa



IGI



May 11, 2026
IGI Report No. LG794615199
HEXAGONAL MODIFIED BRILLIANT
1.91 CARAT
D
VVS 2
65.4%
62%
Thick to Very Thick
Pointed
EXCELLENT
EXCELLENT
NONE
IGI LG794615199
Comments: This Laboratory Grown Diamond was created by Chemical Vapor Deposition (CVD) growth process.
Type IIa