



ELECTRONIC COPY

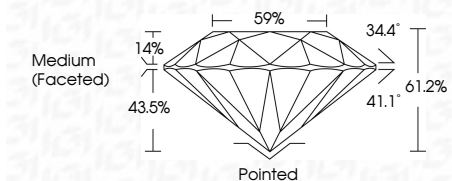
LG794614195
Report verification at igi.org



April 30, 2026
IGI Report Number **LG794614195**
Description **LABORATORY GROWN DIAMOND**
Shape and Cutting Style **ROUND BRILLIANT**
Measurements **6.55 - 6.58 X 4.02 MM**

GRADING RESULTS

Carat Weight **1.06 CARAT**
Color Grade **F**
Clarity Grade **VS 2**
Cut Grade **IDEAL**



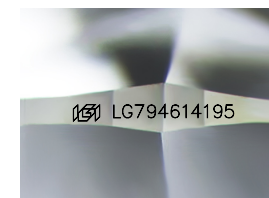
ADDITIONAL GRADING INFORMATION

Polish **EXCELLENT**
Symmetry **EXCELLENT**
Fluorescence **NONE**
Inscription(s) **IGI LG794614195**
Comments: This Laboratory Grown Diamond was created by Chemical Vapor Deposition (CVD) growth process. Type IIa



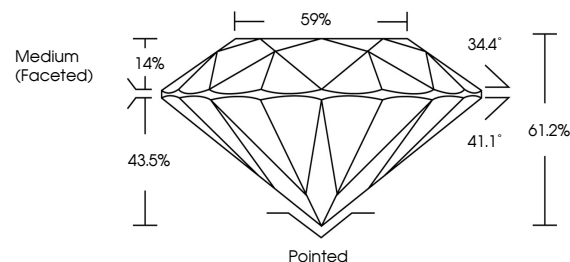
IGI

April 30, 2026
IGI Report No LG794614195
ROUND BRILLIANT
6.55 - 6.58 X 4.02 MM
1.06 CARAT
F
VS 2
IDEAL
61.2%
59%
Medium (Faceted)
Pointed
EXCELLENT
EXCELLENT
NONE
IGI LG794614195
Comments: This Laboratory Grown Diamond was created by Chemical Vapor Deposition (CVD) growth process. Type IIa

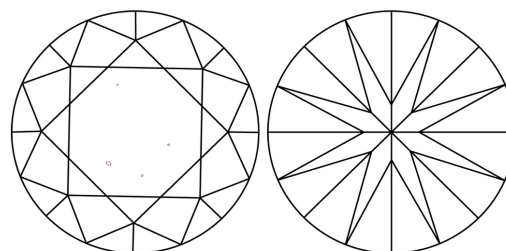


Sample Image Used

PROPORTIONS



CLARITY CHARACTERISTICS



KEY TO SYMBOLS

Red symbols indicate internal characteristics.
Green symbols indicate external characteristics.

COLOR

D E F G H I J Faint Very Light Light

CLARITY

FL	IF	VS ¹⁻²	VS ¹⁻²	SI ¹⁻²	I ¹⁻³
Flawless	Internally Flawless	Very Very Slightly Included	Very Slightly Included	Slightly Included	Included

