



ELECTRONIC COPY

LG794613751
Report verification at igi.org



May 6, 2026

IGI Report Number **LG794613751**

Description **LABORATORY GROWN DIAMOND**

Shape and Cutting Style **ANTIQUÉ CUSHION CUT**

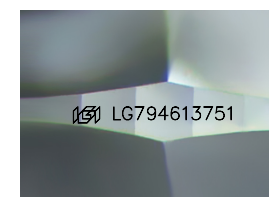
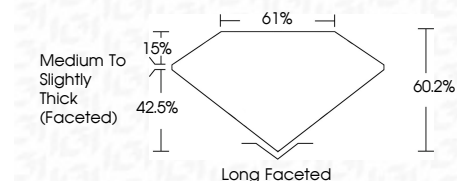
Measurements **12.14 X 9.05 X 5.45 MM**

GRADING RESULTS

Carat Weight **5.05 CARATS**

Color Grade **E**

Clarity Grade **VVS 2**



Sample Image Used

ADDITIONAL GRADING INFORMATION

Polish **EXCELLENT**

Symmetry **EXCELLENT**

Fluorescence **NONE**

Inscription(s) **IGI LG794613751**

Comments: This Laboratory Grown Diamond was created by Chemical Vapor Deposition (CVD) growth process. Type IIa



May 6, 2026	IGI Report No LG794613751	5.05 CARATS	E
ANTIQUÉ CUSHION CUT	12.14 X 9.05 X 5.45 MM	VVS 2	60.2%
Carat Weight	Color Grade	Depth	Table
5.05	E	42.5%	15%
Color Grade	Clarity Grade	Girdle	Medium to Slightly Thick (Faceted)
E	VVS 2	Long Faceted	Long Faceted
Clarity Grade	Polish	Symmetry	EXCELLENT
VVS 2	EXCELLENT	Fluorescence	NONE
Polish	Symmetry	Inscription(s)	IGI LG794613751
EXCELLENT	EXCELLENT	Comments:	This Laboratory Grown Diamond was created by Chemical Vapor Deposition (CVD) growth process. Type IIa

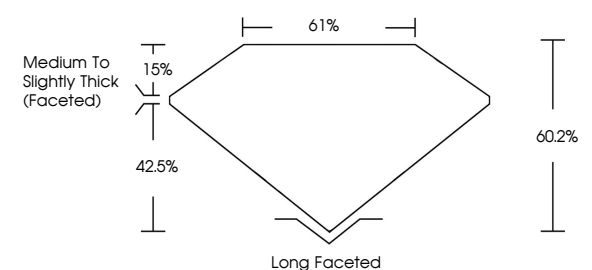
COLOR

D	E	F	G	H	I	J	Faint	Very Light	Light
---	---	---	---	---	---	---	-------	------------	-------

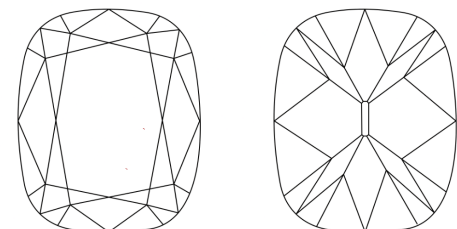
CLARITY

FL	IF	VVS ¹⁻²	VS ¹⁻²	SI ¹⁻²	I ¹⁻³
Flawless	Internally Flawless	Very Very Slightly Included	Very Slightly Included	Slightly Included	Included

PROPORTIONS



CLARITY CHARACTERISTICS



KEY TO SYMBOLS

Red symbols indicate internal characteristics.
Green symbols indicate external characteristics.

