



ELECTRONIC COPY

LG794612234
Report verification at igi.org



May 4, 2026

IGI Report Number **LG794612234**

Description **LABORATORY GROWN DIAMOND**

Shape and Cutting Style **PEAR MODIFIED BRILLIANT**

Measurements **8.14 X 5.30 X 3.31 MM**

GRADING RESULTS

Carat Weight **1.02 CARAT**

Color Grade **FANCY INTENSE PINK**

Clarity Grade **VS 1**

May 4, 2026

IGI Report Number **LG794612234**

Description **LABORATORY GROWN DIAMOND**

Shape and Cutting Style **PEAR MODIFIED BRILLIANT**

Measurements **8.14 X 5.30 X 3.31 MM**

GRADING RESULTS

Carat Weight **1.02 CARAT**

Color Grade **FANCY INTENSE PINK**

Clarity Grade **VS 1**

ADDITIONAL GRADING INFORMATION

Polish **VERY GOOD**

Symmetry **VERY GOOD**

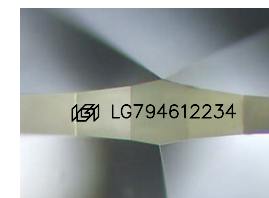
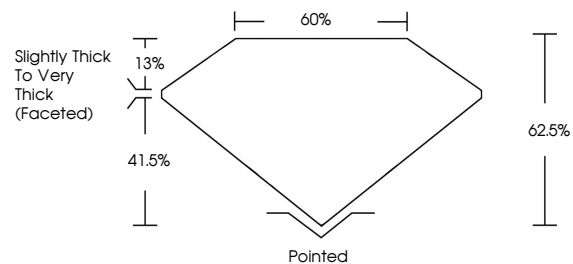
Fluorescence **SLIGHT**

Inscription(s) **IGI LG794612234**

Comments: This Laboratory Grown Diamond was created by Chemical Vapor Deposition (CVD) growth process.

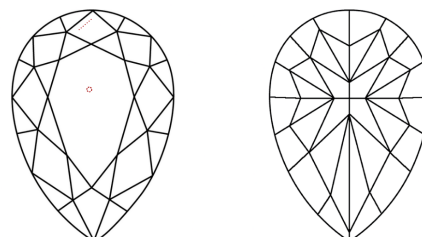
Indications of post-growth treatment.

PROPORTIONS



Sample Image Used

CLARITY CHARACTERISTICS



KEY TO SYMBOLS

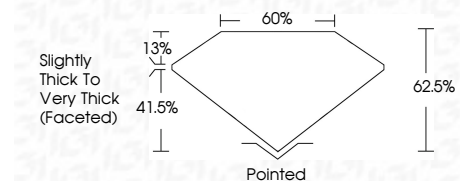
Red symbols indicate internal characteristics.
Green symbols indicate external characteristics.

COLOR

D E F G H I J Faint Very Light Light

CLARITY

FL	IF	VS ¹⁻²	VS ¹⁻²	SI ¹⁻²	I ¹⁻³
Flawless	Internally Flawless	Very Very Slightly Included	Very Slightly Included	Slightly Included	Included



ADDITIONAL GRADING INFORMATION

Polish **VERY GOOD**

Symmetry **VERY GOOD**

Fluorescence **SLIGHT**

Inscription(s) **IGI LG794612234**

Comments: This Laboratory Grown Diamond was created by Chemical Vapor Deposition (CVD) growth process. Indications of post-growth treatment.



May 4, 2026
IGI Report No LG794612234
PEAR MODIFIED BRILLIANT
8.14 X 5.30 X 3.31 MM
1.02 CARAT
FANCY INTENSE PINK
VS 1
62.5%
41.5%
13%
Pointed
VERY GOOD
VERY GOOD
SLIGHT
IGI LG794612234

Comments: This Laboratory Grown Diamond was created by Chemical Vapor Deposition (CVD) growth process. Indications of post-growth treatment.