



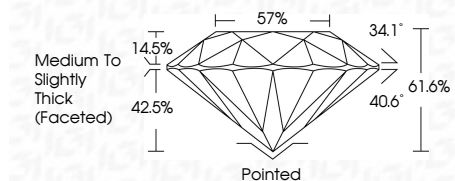
ELECTRONIC COPY

LG794611952
Report verification at igi.org



April 27, 2026
IGI Report Number **LG794611952**
Description **LABORATORY GROWN DIAMOND**
Shape and Cutting Style **ROUND BRILLIANT**
Measurements **8.06 - 8.10 X 4.98 MM**

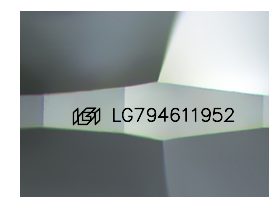
GRADING RESULTS
Carat Weight **2.01 CARATS**
Color Grade **D**
Clarity Grade **VVS 2**
Cut Grade **IDEAL**



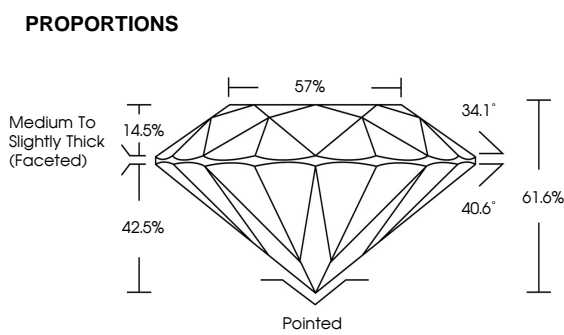
ADDITIONAL GRADING INFORMATION
Polish **EXCELLENT**
Symmetry **EXCELLENT**
Fluorescence **NONE**
Inscription(s) **IGI LG794611952**
Comments: As Grown - No indication of post-growth treatment.
This Laboratory Grown Diamond was created by High Pressure High Temperature (HPHT) growth process.
Type II



April 27, 2026
IGI Report No LG794611952
ROUND BRILLIANT
2.01 CARATS
D
Color Grade **VVS 2**
Clarity Grade **IDEAL**
Depth **61.6%**
Table **14.5%**
Girdle **57%**
Medium To Slightly Thick (Faceted)
Culet **Pointed**
Polish **EXCELLENT**
Symmetry **EXCELLENT**
Fluorescence **NONE**
Inscriptions(s) **IGI LG794611952**
Comments: As Grown - No indication of post-growth treatment.
This Laboratory Grown Diamond was created by High Pressure High Temperature (HPHT) growth process.
Type II



Sample Image Used



COLOR

D	E	F	G	H	I	J	Faint	Very Light	Light
---	---	---	---	---	---	---	-------	------------	-------

CLARITY

FL	IF	VVS ¹⁻²	VS ¹⁻²	SI ¹⁻²	I ¹⁻³
Flawless	Internally Flawless	Very Very Slightly Included	Very Slightly Included	Slightly Included	Included

