



ELECTRONIC COPY

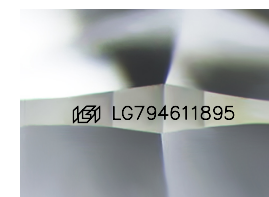
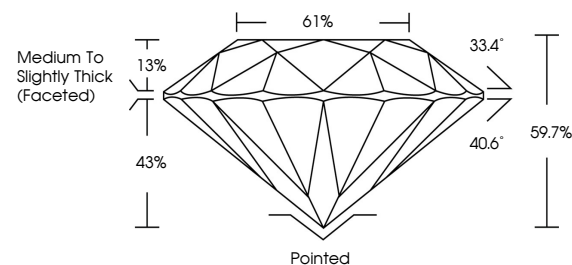
LG794611895
Report verification at igi.org



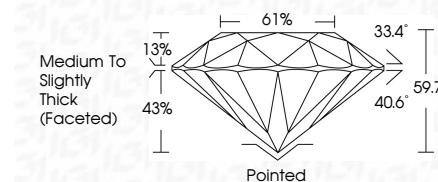
April 27, 2026
IGI Report Number **LG794611895**
Description **LABORATORY GROWN DIAMOND**
Shape and Cutting Style **ROUND BRILLIANT**
Measurements **8.12 - 8.16 X 4.86 MM**
GRADING RESULTS
Carat Weight **2.00 CARATS**
Color Grade **E**
Clarity Grade **VVS 1**
Cut Grade **EXCELLENT**

April 27, 2026
IGI Report Number **LG794611895**
Description **LABORATORY GROWN DIAMOND**
Shape and Cutting Style **ROUND BRILLIANT**
Measurements **8.12 - 8.16 X 4.86 MM**
GRADING RESULTS
Carat Weight **2.00 CARATS**
Color Grade **E**
Clarity Grade **VVS 1**
Cut Grade **EXCELLENT**

PROPORTIONS



Sample Image Used



ADDITIONAL GRADING INFORMATION
Polish **EXCELLENT**
Symmetry **EXCELLENT**
Fluorescence **NONE**
Inscription(s) **IGI LG794611895**

Comments: This Laboratory Grown Diamond was created by Chemical Vapor Deposition (CVD) growth process. Type IIa

COLOR

D E F G H I J Faint Very Light Light

CLARITY

FL	IF	VVS ¹⁻²	VS ¹⁻²	SI ¹⁻²	I ¹⁻³
Flawless	Internally Flawless	Very Very Slightly Included	Very Slightly Included	Slightly Included	Included

ADDITIONAL GRADING INFORMATION

Polish **EXCELLENT**
Symmetry **EXCELLENT**
Fluorescence **NONE**
Inscription(s) **IGI LG794611895**
Comments: This Laboratory Grown Diamond was created by Chemical Vapor Deposition (CVD) growth process. Type IIa



IGI



April 27, 2026
IGI Report No LG794611895
ROUND BRILLIANT
8.12 - 8.16 X 4.86 MM
2.00 CARATS
E
VVS 1
EXCELLENT
59.7%
61%
Medium To Slightly Thick (Faceted)
Pointed
EXCELLENT
EXCELLENT
NONE
IGI LG794611895
Comments: This Laboratory Grown Diamond was created by Chemical Vapor Deposition (CVD) growth process. Type IIa