



ELECTRONIC COPY

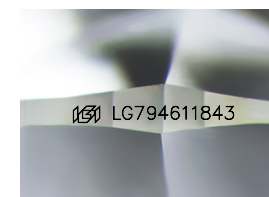
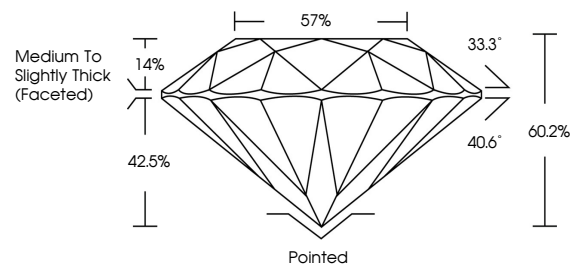
LG794611843
Report verification at igi.org



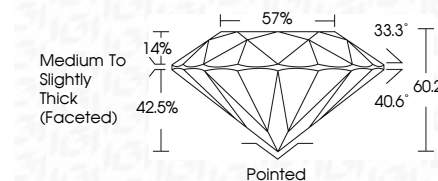
April 27, 2026
IGI Report Number **LG794611843**
Description **LABORATORY GROWN DIAMOND**
Shape and Cutting Style **ROUND BRILLIANT**
Measurements **6.88 - 6.91 X 4.15 MM**
GRADING RESULTS
Carat Weight **1.21 CARAT**
Color Grade **F**
Clarity Grade **FLAWLESS**
Cut Grade **IDEAL**

April 27, 2026
IGI Report Number **LG794611843**
Description **LABORATORY GROWN DIAMOND**
Shape and Cutting Style **ROUND BRILLIANT**
Measurements **6.88 - 6.91 X 4.15 MM**
GRADING RESULTS
Carat Weight **1.21 CARAT**
Color Grade **F**
Clarity Grade **FLAWLESS**
Cut Grade **IDEAL**

PROPORTIONS



Sample Image Used



ADDITIONAL GRADING INFORMATION
Polish **EXCELLENT**
Symmetry **EXCELLENT**
Fluorescence **NONE**
Inscription(s) **IGI LG794611843**
Comments: As Grown - No indication of post-growth treatment.
This Laboratory Grown Diamond was created by High Pressure High Temperature (HPHT) growth process.
Type II

COLOR

D E F G H I J Faint Very Light Light

CLARITY

FL	IF	VS ¹⁻²	VS ¹⁻²	SI ¹⁻²	I ¹⁻³
Flawless	Internally Flawless	Very Very Slightly Included	Very Slightly Included	Slightly Included	Included

ADDITIONAL GRADING INFORMATION

Polish **EXCELLENT**
Symmetry **EXCELLENT**
Fluorescence **NONE**
Inscription(s) **IGI LG794611843**
Comments: As Grown - No indication of post-growth treatment.
This Laboratory Grown Diamond was created by High Pressure High Temperature (HPHT) growth process.
Type II



IGI



April 27, 2026
IGI Report No LG794611843
ROUND BRILLIANT
6.88 - 6.91 X 4.15 MM
1.21 CARAT
F
FLAWLESS
IDEAL
60.2%
57%
Medium To Slightly Thick (Faceted)
Pointed
EXCELLENT
EXCELLENT
NONE
IGI LG794611843
Comments: As Grown - No indication of post-growth treatment.
This Laboratory Grown Diamond was created by High Pressure High Temperature (HPHT) growth process.
Type II