



**ELECTRONIC COPY**

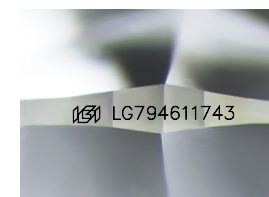
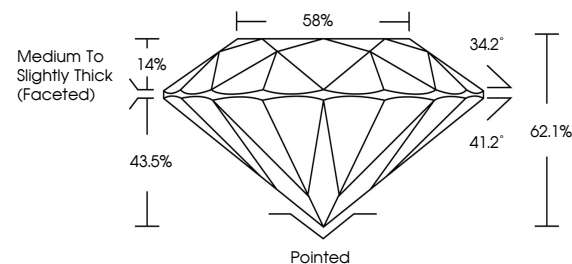
LG794611743  
Report verification at igi.org



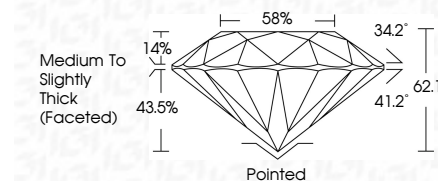
April 27, 2026  
IGI Report Number **LG794611743**  
Description **LABORATORY GROWN DIAMOND**  
Shape and Cutting Style **ROUND BRILLIANT**  
Measurements **6.37 - 6.41 X 3.97 MM**  
**GRADING RESULTS**  
Carat Weight **1.00 CARAT**  
Color Grade **D**  
Clarity Grade **VS 1**  
Cut Grade **EXCELLENT**

April 27, 2026  
IGI Report Number **LG794611743**  
Description **LABORATORY GROWN DIAMOND**  
Shape and Cutting Style **ROUND BRILLIANT**  
Measurements **6.37 - 6.41 X 3.97 MM**  
**GRADING RESULTS**  
Carat Weight **1.00 CARAT**  
Color Grade **D**  
Clarity Grade **VS 1**  
Cut Grade **EXCELLENT**

**PROPORTIONS**



Sample Image Used



**ADDITIONAL GRADING INFORMATION**  
Polish **EXCELLENT**  
Symmetry **EXCELLENT**  
Fluorescence **NONE**  
Inscription(s) **IGI LG794611743**  
Comments: As Grown - No indication of post-growth treatment.  
This Laboratory Grown Diamond was created by High Pressure High Temperature (HPHT) growth process.  
Type II

**COLOR**

D E F G H I J Faint Very Light Light

**CLARITY**

FL	IF	VS <sup>1-2</sup>	VS <sup>1-2</sup>	SI <sup>1-2</sup>	I <sup>1-3</sup>
Flawless	Internally Flawless	Very Very Slightly Included	Very Slightly Included	Slightly Included	Included

**ADDITIONAL GRADING INFORMATION**

Polish **EXCELLENT**  
Symmetry **EXCELLENT**  
Fluorescence **NONE**  
Inscription(s) **IGI LG794611743**  
Comments: As Grown - No indication of post-growth treatment.  
This Laboratory Grown Diamond was created by High Pressure High Temperature (HPHT) growth process.  
Type II



**IGI**



April 27, 2026  
IGI Report No LG794611743  
**ROUND BRILLIANT**  
6.37 - 6.41 X 3.97 MM  
1.00 CARAT  
Color Grade **D**  
Clarity Grade **VS 1**  
Depth **62.1%**  
Table **58%**  
Girdle **Medium To Slightly Thick (Faceted)**  
Culet **Pointed**  
Polish **EXCELLENT**  
Symmetry **EXCELLENT**  
Fluorescence **NONE**  
Inscriptions(s) **IGI LG794611743**  
Comments: As Grown - No indication of post-growth treatment.  
This Laboratory Grown Diamond was created by High Pressure High Temperature (HPHT) growth process.  
Type II