



ELECTRONIC COPY

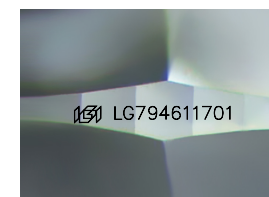
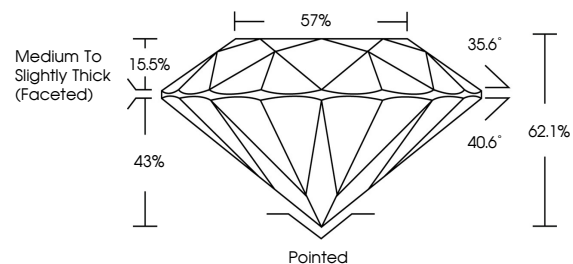
LG794611701 Report verification at igi.org



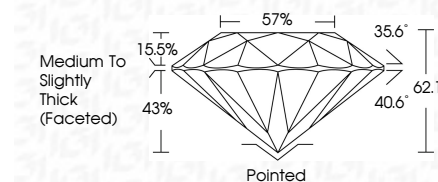
April 27, 2026
IGI Report Number LG794611701
Description LABORATORY GROWN DIAMOND
Shape and Cutting Style ROUND BRILLIANT
Measurements 6.35 - 6.40 X 3.96 MM
GRADING RESULTS
Carat Weight 1.01 CARAT
Color Grade D
Clarity Grade VS 2
Cut Grade IDEAL

April 27, 2026
IGI Report Number LG794611701
Description LABORATORY GROWN DIAMOND
Shape and Cutting Style ROUND BRILLIANT
Measurements 6.35 - 6.40 X 3.96 MM
GRADING RESULTS
Carat Weight 1.01 CARAT
Color Grade D
Clarity Grade VS 2
Cut Grade IDEAL

PROPORTIONS



Sample Image Used



ADDITIONAL GRADING INFORMATION

Polish EXCELLENT
Symmetry EXCELLENT
Fluorescence NONE
Inscription(s) IGI LG794611701

Comments: As Grown - No indication of post-growth treatment. This Laboratory Grown Diamond was created by High Pressure High Temperature (HPHT) growth process. Type II

COLOR

D E F G H I J Faint Very Light Light

CLARITY

FL IF VS 1-2 VS 1-2 SI 1-2 I 1-3
Flawless Internally Flawless Very Very Slightly Included Very Slightly Included Slightly Included Included

ADDITIONAL GRADING INFORMATION

Polish EXCELLENT
Symmetry EXCELLENT
Fluorescence NONE
Inscription(s) IGI LG794611701
Comments: As Grown - No indication of post-growth treatment. This Laboratory Grown Diamond was created by High Pressure High Temperature (HPHT) growth process. Type II



IGI



April 27, 2026
IGI Report No LG794611701
ROUND BRILLIANT
6.35 - 6.40 X 3.96 MM
1.01 CARAT
Color Grade D
Clarity Grade VS 2
Depth 62.1%
Table 57%
Girdle Medium To Slightly Thick (Faceted)
Culet Pointed
Polish EXCELLENT
Symmetry EXCELLENT
Fluorescence NONE
Inscriptions(s) IGI LG794611701
Comments: As Grown - No indication of post-growth treatment. This Laboratory Grown Diamond was created by High Pressure High Temperature (HPHT) growth process. Type II