



ELECTRONIC COPY

LG794611611
Report verification at igi.org



April 27, 2026

IGI Report Number **LG794611611**

Description **LABORATORY GROWN DIAMOND**

Shape and Cutting Style **ROUND BRILLIANT**

Measurements **6.36 - 6.39 X 3.99 MM**

GRADING RESULTS

Carat Weight **1.01 CARAT**

Color Grade **E**

Clarity Grade **VVS 2**

Cut Grade **IDEAL**

April 27, 2026

IGI Report Number **LG794611611**

Description **LABORATORY GROWN DIAMOND**

Shape and Cutting Style **ROUND BRILLIANT**

Measurements **6.36 - 6.39 X 3.99 MM**

GRADING RESULTS

Carat Weight **1.01 CARAT**

Color Grade **E**

Clarity Grade **VVS 2**

Cut Grade **IDEAL**

ADDITIONAL GRADING INFORMATION

Polish **EXCELLENT**

Symmetry **EXCELLENT**

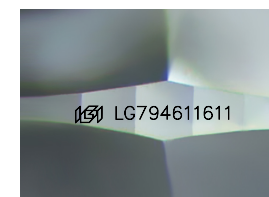
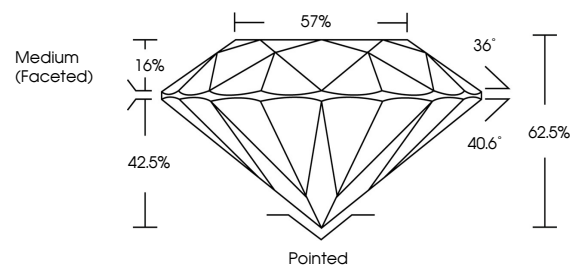
Fluorescence **NONE**

Inscription(s) **IGI LG794611611**

Comments: As Grown - No indication of post-growth treatment.

This Laboratory Grown Diamond was created by High Pressure High Temperature (HPHT) growth process. Type II

PROPORTIONS



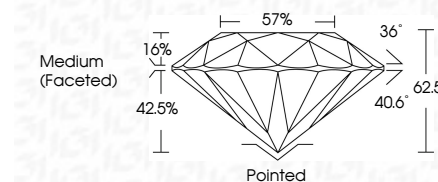
Sample Image Used

COLOR

D E F G H I J Faint Very Light Light

CLARITY

FL	IF	VVS ¹⁻²	VS ¹⁻²	SI ¹⁻²	I ¹⁻³
Flawless	Internally Flawless	Very Very Slightly Included	Very Slightly Included	Slightly Included	Included



ADDITIONAL GRADING INFORMATION

Polish **EXCELLENT**

Symmetry **EXCELLENT**

Fluorescence **NONE**

Inscription(s) **IGI LG794611611**

Comments: As Grown - No indication of post-growth treatment.

This Laboratory Grown Diamond was created by High Pressure High Temperature (HPHT) growth process. Type II



IGI



April 27, 2026
IGI Report No LG794611611
ROUND BRILLIANT
6.36 - 6.39 X 3.99 MM
1.01 CARAT
E
VVS 2
IDEAL
62.5%
57%
Medium (Faceted)

Culet
Polish
Symmetry
Fluorescence
Inscriptions(s)

Pointed
EXCELLENT
EXCELLENT
NONE
IGI LG794611611

Comments:
As Grown - No indication of post-growth treatment.
This Laboratory Grown Diamond was created by High Pressure High Temperature (HPHT) growth process. Type II